

**PLANNING, POLICY AND GOVERNMENTAL AFFAIRS
APRIL 17, 2014**

TAB	DESCRIPTION	ACTION
1	UNIVERSITY OF IDAHO – ANNUAL PROGRESS REPORT	Information Item
2	PRESIDENTS’ COUNCIL REPORT	Information Item
3	IDAHO EPSCOR – ANNUAL REPORT	Information Item
4	DIVISION OF VOCATIONAL REHABILITATION – ADMINISTRATOR, INTERIM APPOINTMENT	Motion to Approve
5	AMENDMENT TO BOARD POLICY I.R. (V.L.) CAMPUS SECURITY – 1ST READING	Motion to Approve
6	2014 LEGISLATIVE UPDATE	Information Item

THIS PAGE INTENTIONALLY LEFT BLANK

PLANNING, POLICY AND GOVERNMENTAL AFFAIRS
APRIL 17, 2014

SUBJECT

University of Idaho (UI) Annual Progress Report

APPLICABLE STATUTE, RULE, OR POLICY

Idaho State Board of Education Governing Policies & Procedures, Section I.M.3.

BACKGROUND/DISCUSSION

This agenda item fulfills the Board's requirement for the University of Idaho to provide a progress report on the institution's strategic plan, details of implementation, status of goals and objectives and information on other points of interest in accordance with a schedule and format established by the Board's Executive Director.

President Chuck Staben will provide a 15-minute overview of UI's progress in carrying out the University's strategic plan.

IMPACT

The University of Idaho's strategic plan drives the University's integrated planning; programming, budgeting, and assessment cycle and is the basis for the institution's annual budget requests and performance measure reports to the State Board of Education, the Division of Financial Management and the Legislative Services Office.

ATTACHMENT

Attachment 1 – Annual Report

Page 3

BOARD ACTION

This item is for informational purposes only. Any action will be at the Board's discretion.

THIS PAGE INTENTIONALLY LEFT BLANK

Progress Report

April 2014

Strategic Plan Implementation

- Completing the current strategic plan and beginning the process of creating a new strategic plan, as “Leading Idaho: Strategic Plan 2011-2015” will sunset within the next year.
- University of Idaho has fully implemented a revised general education curriculum that includes assessment points across all four years of undergraduate education
- University of Idaho has fully implemented program assessment with continuous improvement based on the University learning outcomes
- University of Idaho has implemented its new clinical faculty ranks as a strategy to leverage the skills of non-tenure track faculty
- President’s Diversity Council has made significant strides in terms of a coherent recruitment program for diverse students, faculty, and staff as well as a robust student retention program. Concurrently, there is increasing cultural competency through curricular changes and university-wide initiatives

Personnel Budget

- 819 FTE faculty (35% of the population)
- 641 FTE managerial/professional (27% of the population)
- 885 FTE classified (38% of the population)

Enrollment

- Graduation Rate of 54%
- Retention Rate of 79%
- Total Enrollment 11,884 (headcount); 10,017 (FTE) – Fall, 2013
- Record number of national merit scholars (76), including 25 freshmen enrolled in Fall 2013
- Recognized by Forbes magazine as among the "Top 25 Value Colleges" in the nation
- Recognized in 2013 by US News and World Report as the 35th "Best College for Veterans" nationwide for initiatives that help veterans and active service members apply, pay for and complete their degrees

Research and Economic Development

- New NSF EPSCoR RII awards entitled *Managing Idaho’s Landscape for Ecological Services*— \$20 million over 5 years
- Idaho Pathways: a project funded by the Economic Development Agency and the Idaho Department of Commerce to develop a comprehensive economic

PLANNING, POLICY AND GOVERNMENTAL AFFAIRS
APRIL 17, 2014

development strategy for each of the six economic development districts and for the State.

- NSF Integrated Graduate Education and Research Traineeship award of \$3.1 million over five years to develop its graduate interdisciplinary water resources degree program
- Research expenditures reported to NSF for 2013 were \$95,891,000
- 2010 study done by Economic Model Specialists Inc. shows the existence of the University of Idaho has a \$934 million impact on the economy of Idaho.
- Classified by the prestigious Carnegie Foundation distinction for “high research activity” among national Research Universities
- Celebrating 125 years as one of the nation's top research institutions, which provides an engine for educational innovation and economic growth in Idaho
- Contributes nearly \$1 billion to Idaho’s economy through the combined activities of the University and its alumni. That’s nearly 2 percent of the state’s economy

Special/Health Programs

- WWAMI added five seats (Washington, Wyoming, Alaska, Montana, Idaho)
- Idaho Veterinary Medical Education
- Forest Utilization Research and Outreach (FUR)
- Agricultural Research and Extension Service (ARES)

University Updates

- Named to the Presidential Honor Roll for Community Service again in 2013 and one of only five institutions in the Pacific Northwest awarded "with distinction" status
- College of Law ranked a top-25 "Most Innovative" program by PreLaw magazine, fall 2013
- Successful Program/Department Accreditation review and awards in the Colleges of Engineering, Education, Letters, Arts, & Social Sciences, and Natural Resources.

Collaborations

- Research: Center for Advanced Energy Systems
- Research: Experimental Program to Stimulate Competitive Research
- Research: Idea Network of Biomedical Research Excellence (INBRE)
- Research: Regional Approaches to Climate Change for the Pacific Northwest
- Research/Economic Development: Comprehensive Economic Development Strategy for Idaho
- City/Chamber of Commerce/UI collaboration to promote and brand community events
- Collaboration with City and Gritman Medical Center to plan and develop Legacy Crossing

PLANNING, POLICY AND GOVERNMENTAL AFFAIRS
APRIL 17, 2014

- Intermodal Transit Center with City of Moscow, houses UI Parking and Transportation

Capital Campaign

- The University is in the last year of its 7.5 year \$225M *Inspiring Futures* capital campaign.
- The university has received 100,000 gifts from over 40,000 donors in support of our campaign.
- Through the generosity of individuals, corporations and foundations, we have achieved 95 percent of our campaign goal.
- In FY 2013 the university raised \$27,626,903.

Outreach

- McCall Outdoor Science School program finalist for McGraw Award
- 4-H Food Smart Families funded by National 4-H Council and ConAgra Foundation will provide in-depth nutrition, grocery shopping, etc. skills for 2500 underserved youth in Idaho
- Community Service Hours of 267,000; 162,000 through service learning courses, 105,000 through service projects sponsored by the ASUI volunteer Center and other student organizations.
- Digin' It Science, Technology, Engineering & Math program for middle school aged girls in Coeur d'Alene

New Buildings

- Acquired MOSS Field Campus in McCall, Idaho
- Final Design for IRIC; Later in this meeting a request for approval to start construction \$49 m project (\$5M from the state/\$44 M to be bonded)
- In Design for Education Building renovations done in collaboration with DPW; Details later in this meeting for approval to start construction \$17.1M (\$7M state,\$7.5M bonded, \$2.6M gifts)
- In various stages of design: University House
 - Aquaculture Research lab
 - Ada County Courthouse/ Law and Justice Learning Center
- Recently completed: CNR Parker Farm Classroom/Offices \$650K
 - SUB 2nd Floor Renovation \$1.5 M
 - Deceo Center Lab \$495K
 - Niccolls Child and Food Labs Renovation \$3 M (\$830K State, \$2.7M gifts)

THIS PAGE INTENTIONALLY LEFT BLANK

PRESIDENTS' COUNCIL

SUBJECT

Presidents' Council Report

BACKGROUND/DISCUSSION

President Joe Dunlap, North Idaho Community College President and current chair of the Presidents' Council, will give a report on the recent activities of the Presidents' Council and answer questions. The Presidents' Council met on March 10th and April 1st.

At the March and April meetings they discussed the development of a Board policy regarding the recent passage of allowing certain individuals to carry concealed weapons on the universities and colleges campuses, the workforce gap analysis study, the Idaho Community College Consortium, budget guidelines, and Enrollment Workload Adjustment related topics.

ATTACHMENT

Attachment 1 – Community College Consortium Mission and Vision Page 3

BOARD ACTION

This item is intended for informational purposes only. Any action will be at the Board's discretion.

THIS PAGE INTENTIONALLY LEFT BLANK

Idaho Community College Consortium Mission Statement and Values

March 2014

Mission Statement for the Idaho Community College Consortium:

The Community College Trustees of Idaho will cooperate in promoting, representing, supporting, and serving the community colleges to ensure the highest quality of education and training to students and the communities they serve.

Values Statements for the Idaho Community College Consortium:

The Community College Trustees of Idaho will:

- Continually strive for a common community college voice while preserving local autonomy;
- Demonstrate cooperation;
- Promote student access;
- Promote and measure student success;
- Be fiscally responsible;
- Proactively and responsively provide high quality educational and training programs;
- Proactively and responsively develop economic and workforce opportunities;
- Promote the role and mission of community colleges; and
- Embrace diversity.

THIS PAGE INTENTIONALLY LEFT BLANK

IDAHO EPSCoR

SUBJECT

Experimental Program to Stimulate Competitive Research (EPSCoR) Annual Summary Report

REFERENCE

August 2012	EPSCoR provided their annual report to the Board
August 2013	EPSCoR provided their annual report to the Board

APPLICABLE STATUTE, RULE, OR POLICY

Idaho State Board of Education Governing Policies & Procedures, Section III.W. Higher Education Research

BACKGROUND/DISCUSSION

The Experimental Program to Stimulate Competitive Research (EPSCoR) is a federal-state partnership designed to enhance the science and engineering research, education, and technology capabilities of states that traditionally have received smaller amounts of federal research and development funds. Through EPSCoR, participating states are building a high-quality, academic research base that is serving as a backbone of a scientific and technological enterprise.

Idaho EPSCoR is currently led by a state committee composed of 16 members with diverse professional backgrounds from both the public and private sectors and from all regions in the state. The Idaho EPSCoR committee oversees the implementation of the EPSCoR program and ensures program goals and objectives are met. The Idaho EPSCoR office and the Idaho EPSCoR Project Director are located at the University of Idaho. Partner institutions are Boise State University and Idaho State University.

Consistent with Board Policy III.W.2. d., EPSCoR has prepared an annual report regarding current EPSCoR activities that details all projects by federal agency source, including reports of project progress from associated external Project Advisory Board (PAB).

ATTACHMENTS

Attachment 1 – Annual Report Presentation	Page 3
Attachment 2 – EPSCoR Overview	Page 11
Attachment 3 – Idaho Outcomes	Page 13

STAFF COMMENTS AND RECOMMENDATIONS


The current Idaho NSF-EPSCoR award is a five (5) year, \$15M award focusing on water resources in a changing climate. The past NSF-EPSCoR award was a five

PLANNING, POLICY AND GOVERNMENTAL AFFAIRS
APRIL 17, 2014

(5) year, \$15M award that expired August 31, 2013. Idaho EPSCoR applied for, and has recently been awarded a new NSF-EPSCoR award for \$20M over five (5) years. NSF-EPSCoR grants require a state matching component, the past award match requirement was \$600,000, these funds have been paid out of the funds allocated for use by the Board's Higher Education Research Council (HERC). The new award has a higher match requirement. This past year (HERC) recommend the Board request an additional \$200,000 to cover the higher matching requirement for the new award. The legislature this last session appropriated an additional \$200,000 for use toward this end. In FY15 the total match paid out of the funds allocated to HERC will be \$600,000.

BOARD ACTION



This item is for informational purposes only. Any action will be at the Board's discretion.





Idaho NSF EPSCoR Research Infrastructure Improvement (RII): Annual Report - 2014

Peter Goodwin, Project Director
Rick Schumaker, Assistant Project Director

Idaho State Board of Education
Moscow, Idaho
April 17, 2014





SBOE Report 2014


www.uidaho.edu/epscor

- ✓ Idaho EPSCoR Overview
- ✓ Accomplishments
- ✓ New EPSCoR RII Awards
- ✓ Concluding Remarks





University of Idaho





“ONEIdaho” Philosophy

Innovation • Integration • Inspiration

Idaho EPSCoR Committee

Howard Grimes
Idaho State University

Donnie Stevens
Veterans Affairs Medical Center

Maxine Bell
Idaho State Representative

Doug Chadderdan
Great Floors LLC

David Tutthill
Idaho Water Engineering

Frank Roberto
Newmont Mining Corporation

John McIvor
University of Idaho

David Hill
Idaho National Laboratory (retired)

Laird Noh, Chairman
Idaho State Senate (retired)

Doyle Jacklin, Former Chairman
Riverbend Commerce Park

Jean'ne Shreeve
University of Idaho

Mark Rudin
Boise State University

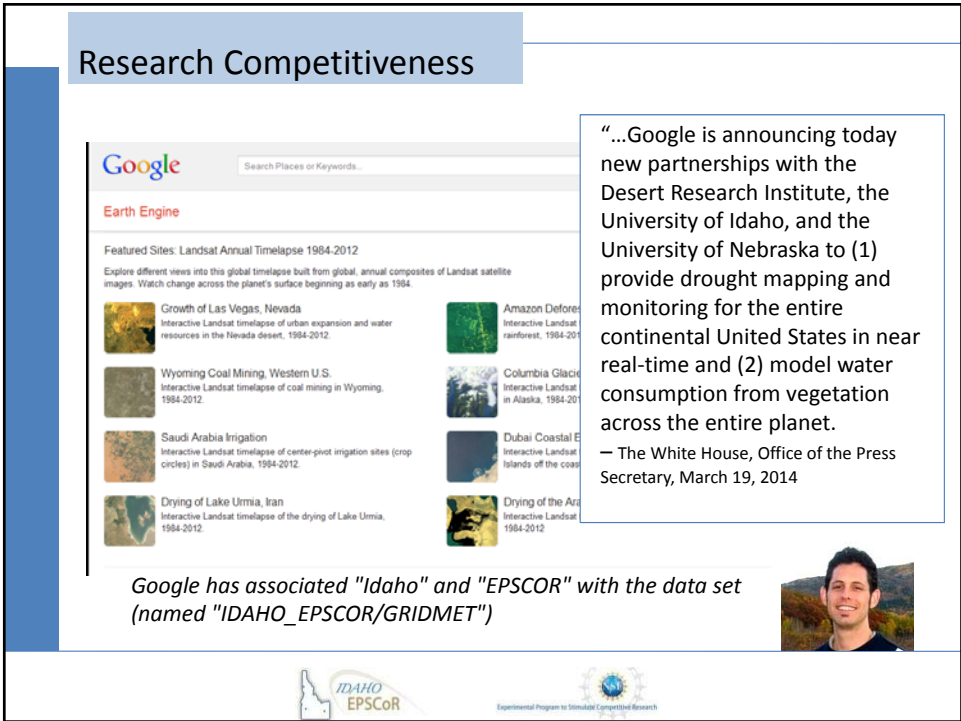
David Barney
Nevada Power and Sierra Pacific Power (retired)

John Goodie
Idaho State Senate

Leo Ray
Fish Breeders of Idaho

Gyni Gilliam
Idaho Department of Commerce (formerly)

Bill Gossling
State Board of Education



Active NSF EPSCoR RII Projects

✓ Track 1: Academic Research Capacity

• *Managing Idaho's Landscapes for Ecosystem Services (MILES); June 2013 – 2018) \$20 M plus required 20% match.*

✓ Track 2: Cyberinfrastructure

• *Western Consortium for Watershed Analysis, Visualization, and Exploration (WC-WAVE) (2013-2016) \$2M to Idaho*

NSF EPSCoR RII - MILES

✓ 11 New Faculty Positions

✓ MURI – Undergraduate Research

✓ Cyberinfrastructure

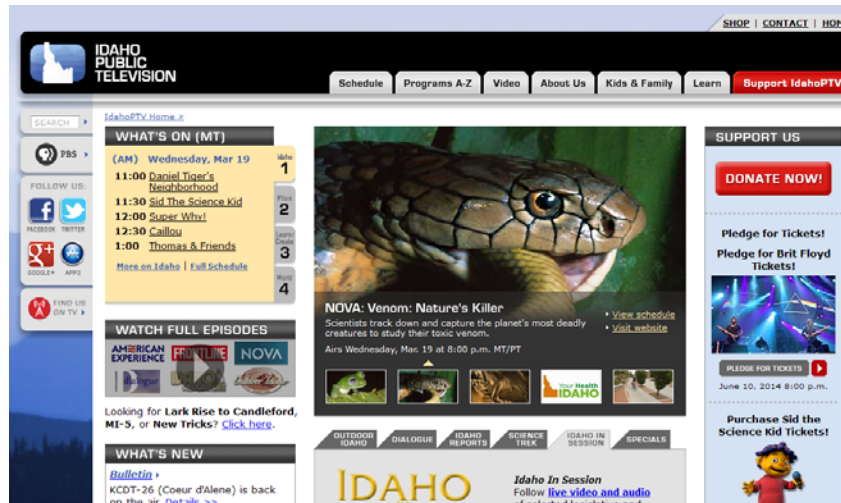
✓ Integrated Statewide Social-Ecological Research

✓ Modeling and Visualization

✓ Diversity contributions to State STEM Roadmap

✓ Stakeholder Engagement

Collaboration



EPSCoR Track 2 RII



Western Consortium of Idaho, Nevada, and New Mexico

- ✓ Watershed Science
- ✓ Visualization and Data
- ✓ Workforce Development and Education

Western Consortium for Watershed Analysis, Visualization, and Exploration



Evidence of Idaho's Success

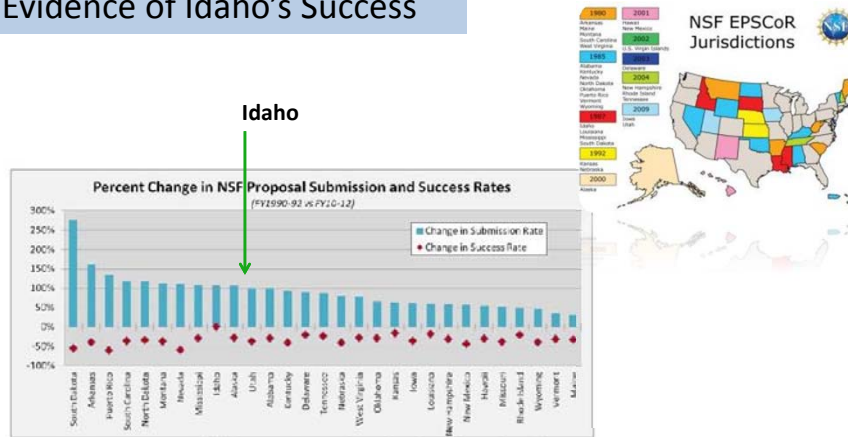


Figure 3-4. Some FY 2012 eligible EPSCoR states have done better than others in increasing their submission rates while minimizing a reduction in success rates. Here a positive “Change in Submission Rate” means an increase in the number of proposals submitted, and a negative “Change in Success Rate” means a decrease in the number of proposals approved. [SOURCE: NSF Competitive Proposal and Award Counts by State/Territory and Fiscal Year of Decision; NSF.gov/awardsearch]



National Academies Report

An increase in the number of proposals is an indication that a state is trying to raise its research profile by hiring additional researchers or giving current faculty more time to devote to proposal writing. The challenge is to maintain quality, which is reflected in the success rate, while increasing quantity. This is particularly difficult during periods when overall success rates are falling.

All states have increased their number of submissions during the past two decades, and many have managed to do so without an excessive drop in success rate (see Figure 3-4). **Idaho, for example, has doubled its number of proposals with no decline in success rate.** Conversely, other EPSCoR states have failed to keep pace and have actually experienced a decline in their rankings for R&D expenditures.

Committee to Evaluate the Experimental Program to Stimulate Competitive Research (EPSCoR) and Similar Federal Agency Programs (2013). *The Experimental Program to Stimulate Competitive Research*; Committee on Science, Engineering, and Public Policy, Policy and Global Affairs; National Academy of Sciences, National Academy of Engineering, and Institute of Medicine of the National Academies. The National Academies Press. Washington, D.C. 142 p.



-

[illegible]

Idaho NSF EPSCoR Program

Director: Dr. Peter Goodwin

The Idaho Experimental Program to Stimulate Competitive Research (EPSCoR) represents a federal-state partnership to provide lasting improvements to academic research infrastructure and increase Idaho's research competitiveness. Idaho's EPSCoR partners are the University of Idaho, Boise State University, Idaho State University, and Idaho's 2-year and 4-year colleges.



Idaho EPSCoR is about building community.

"Onelidaho" – an integrated, productive, and creative research culture and community of Idaho researchers and educators.

An EPSCoR Committee of 16 members leads Idaho EPSCoR, with representatives from the public and private sectors, the legislature, and all regions of Idaho. The Director reports to the Idaho EPSCoR Committee and is supported by a professional staff in the Idaho EPSCoR Office, located on the Moscow campus. It leads the planning, administration, and implementation of EPSCoR Research Infrastructure Improvement (RII) programs and supports the state "Science and Technology Plan for Higher

Education" in areas that contribute to the National Research Agenda through the philosophy of ONEIdaho – an integrated, productive, and creative research culture and community of Idaho researchers and educators.

RECENT ACCOMPLISHMENTS

- Catalyzed Cyberinfrastructure (CI) and data management, data sharing, research, and sharing of data products through the Northwest Knowledge Network (NKN), the Idaho LiDAR Consortium, and national systems.
- Engaged more than 400 university faculty, staff, undergraduates, graduate students and technicians and nearly 14,000 K-12 students, teachers, and other stakeholders in STEM programs throughout the state to prepare Idaho's workforce to prosper in a science-based, high technology world.
- Contributed to development of the Idaho STEM Roadmap by leading the State's strategy for increasing diversity in STEM.
- Improved internet connectivity to the Hagerman Fish Culture Experiment Station and the UI Kimberly Research and Extension Center, and created a new Data Manager position at UI.
- Improved cyber-connectivity and broadband access (up to 100 x more) at three rural 2-year and 4-year colleges and two universities via the Idaho Regional Optical Network (IRON), providing increased video collaboration and distance learning capabilities via the Idaho Education Network (IEN).

ACTIVE NSF EPSCoR RII PROJECTS

RII Track 1 - Managing Idaho's Landscapes for Ecosystem Services (MILES) (2013-2018) was funded at \$20.0M in June 2013. It will advance Idaho's capacity to create new knowledge about relationships between the benefits humans get from the natural world (ecosystem services), landscape change, and associated social and economic systems, and establish the infrastructure to provide science-based decision support for sustainably managing Idaho's resources.

The project will facilitate integrated, collaborative research and education on characterization, vulnerability, integrative modeling, and visualization and virtualization, with study sites in the Coeur d'Alene,

Treasure Valley, and Pocatello/Idaho Falls areas. The grant will help Idaho's universities add 11 new faculty positions in related disciplines statewide. It will involve extensive stakeholder engagement, and Cyberinfrastructure, Diversity, and Workforce Development improvements and programs.



USBR Canal - Boise, Idaho



RII Track 2 - Western Consortium for Watershed Analysis and Visualization (WC-WAVE) (2013-2016) is the second \$6.0M collaborative project involving Idaho, Nevada, and New Mexico EPSCoR. It will advance watershed science, workforce development, and education with Visualization and Data Cyberinfrastructure (CI)-enabled discovery and innovation.

RECENTLY COMPLETED THREE CONCURRENT NSF EPSCoR RII PROJECTS IN LATE 2013

- ***Track 1 - Water Resources in a Changing Climate (\$15.0M)*** for research and education capacity related to the effects of climate change on water resources and the impact of these effects on ecological, human, and economic systems.
- ***Track 2 - Western Consortium of Idaho, Nevada, and New Mexico (\$2.0M)*** for cyberinfrastructure and data management capacity to support collaborative regional science; and
- ***C2 - Intra- and Inter-Campus Connectivity (\$1.2M)*** for improved internet connectivity and collaboration at five of Idaho's higher education institutions.

For more information, please contact:

Idaho EPSCoR Office, MS 3029, 875 Perimeter Drive, Moscow, ID 83844-3029
pgoodwin@uidaho.edu 208.885.5742 www.idahoepscor.org

Idaho NSF EPSCoR: RII C2 Outcomes Report (EPS-1006968)

Idaho's *Research Infrastructure Improvement (RII) Inter- and Intra-Campus Connectivity (C2)* project has developed significant statewide capacity for research and research-based education by providing improved cyber-connectivity and broadband access at 2-year, 4-year and rural institutions in Idaho. Through partnerships with the Idaho Regional Optical Network (IRON), more institutions now have high-speed bandwidth connectivity to the Internet. In addition, increased institutional participation in IRON within Idaho now provides more high-speed connections between education and research facilities within the State.

Strategic investments have improved Internet connectivity across Idaho:

- North Idaho College (NIC) / University of Idaho (UI) Harbor Center – Access to high speed Internet and enhanced videoconferencing capabilities were implemented (e.g., the UI facility has 100 times more Internet capacity). The project provided many mutual benefits to the higher-education institutions in northern Idaho, including increased collaboration and joint use of facilities.
- Lewis Clark State College (LCSC) – Access to high-speed Internet and state-of-the-art video capabilities resulted in improved distance education delivery. This enabled video conferencing network traffic for multiple simultaneous video classrooms in high definition.
- College of Southern Idaho (CSI) – Significant improvements have been made to desktop and wireless Internet speeds. The network responsiveness and availability to faculty, instructional computing labs, and wireless networks at the main CSI campus and their branch campuses has been greatly improved. Network upgrades greatly enhanced CSI's ability to support math and science learning and research and have improved services to rural Idaho students.
- Idaho State University (ISU) – Network improvements access to IRON improved collaboration between ISU and affiliate research centers including the University of Idaho, Boise State University, Idaho Education Network, Idaho National Laboratory, and the Center for Advanced Energy Studies with significantly improved bandwidth and redundant links to the Internet. This has expanded ISU's effectiveness in creating educational opportunities for students, faculty, administrators, and research staff.

Idaho also now has a well-organized structure for sharing of data because of a strategic planning effort that resulted in a State Cyberinfrastructure Strategic Plan for Idaho universities. In partnership with the Idaho National Laboratory, a new tenure-track faculty member at the University of Idaho, specializing in data architecture, was hired and is providing expertise for Idaho's growing data management initiatives, including the Northwest Knowledge Network (NKN). This project also contributed to creation of a data portal (housed at the NKN) to increase access and improve management of data.

Improved connectivity is helping Idaho institutions reach a broader audience. With better Internet connections, distance learning is better meeting the needs of underrepresented and rural students. The increased bandwidth and video conferencing now enables improved delivery of video courses for distance education, participation and delivery of dual credit courses through the State's Idaho Education Network (IEN), improved access to college resources for current and prospective students, improved access for employees and students to materials for work and research, and increased ability for faculty to participate in research. For example, many Biology classes at College of Southern Idaho have frequent in-class tasks that require Internet access; those classes serve over 1,160 students each year.

This award leveraged partnerships with the USDA Regional Approaches to Climate Change (REACCH) and NASA Intermountain Climate Education Network (ICE Net) projects to provide professional development and learning opportunities for college instructors and K-12 teachers. Online educational materials on climate change were created and then disseminated to K-12 and community colleges in a variety of ways, including distance learning via live interactive and/or computer-based classes. This has allowed university faculty to communicate relevant research, provide access to new data, and train teachers who are preparing the next generation workforce. Events promoting the use of cyberinfrastructure at ISU and UI improved awareness of these capabilities among faculty, staff, students, and community members. As a result of this work, more of Idaho's residents have better access to STEM research and research based-educational opportunities.

THIS PAGE INTENTIONALLY LEFT BLANK

PLANNING, POLICY AND GOVERNMENTAL AFFAIRS
APRIL 17, 2014

SUBJECT

Idaho Division of Vocation Rehabilitation Interim Administrator Appointment

APPLICABLE STATUTE, RULE, OR POLICY

Idaho State Board of Education Governing Policies and Procedures IV.E.

BACKGROUND/DISCUSSION

Don Alveshire the current Administrator for the Division of Vocational Rehabilitation (IDVR) has resigned his position, following a recent leave of absence, for personal reasons. Jane Donnellan, the Division's Planning and Evaluation Manager has served as the Acting Administrator during the current Administrators leave of absence.

The Executive Director is recommending the appointment of Ms. Donnellan as the Interim Administrator until such time as a permanent administrator may be appointed.

STAFF COMMENTS AND RECOMMENDATIONS

Ms. Donnellan is a long time employee of the Division well versed in the services and clients that rely on the IDVR.

Staff recommends approval.

BOARD ACTION

I move to appoint Jane Donnellan as the Interim Administrator for the Division of Vocational Rehabilitation and to set her salary at \$42.56/hr (\$88,524.80 annually), effective April 17, 2014.

THIS PAGE INTENTIONALLY LEFT BLANK

PLANNING, POLICY AND GOVERNMENTAL AFFAIRS

APRIL 17, 2014

SUBJECT

Amendment to Board Policy V.L. (I.R) Campus Security

APPLICABLE STATUTE, RULE, OR POLICY

Governing Policies and Procedures Section V.R. Campus Security
Section 18-3309(2), Idaho Code

REFERENCE

August 2009

Board approved the removal of references to the Idaho School for the Deaf and Blind, the Idaho Historical Society and the Idaho Commission for Libraries from the all of the Boards Governing Policies and Procedures.

BACKGROUND/DISCUSSION

During the 2014 legislative session Senate Bill 1254 passed allowing for the concealed carry of firearms on public college and university grounds for certain licensed persons. The institutions under the direct governance of the Board have asked that the Board look at implementing a Board policy that would provide additional guidance on the implementation of changes in response to the Bill.

Current Board Policy Section V.R. outlines the requirements for each institution to develop a campus security plan. The legal counsel from each of the four (4) year institutions have worked closely with the Board's legal counsel over the past several weeks and are proposing the language outlined in Attachment 1 prohibiting the carrying of firearms, including open carry, on campus, except under specific circumstances and as allowed in Section 18-3309(2), Idaho Code. Additionally after review of the existing policy staff has determined the policy would be better placed if it were to be moved from Board Policy Section V. Financial Affairs to Board Policy Section I. General Governing Policies and Procedures. While there is a financial impact to the implementation of campus security plans, Section I, contains the other provisions in Board policy relevant to facilities, planning, and reporting.

IMPACT

Proposed changes would make it clear to the institutions that firearms are only allowed on campus as described in section 18-3309(2), Idaho Code or allowed by the institution as part of a campus security plan, or as part of an event or program approved by the chief executive officer of the institution.

ATTACHMENTS

Attachment 1 – Board Policy I.R. Campus Security – First Reading

Page 3

PLANNING, POLICY AND GOVERNMENTAL AFFAIRS

APRIL 17, 2014

STAFF COMMENTS AND RECOMMENDATIONS

Staff shared the proposed amendments with the Institution Presidents during the April Presidents' Council meeting. The Presidents asked questions regarding the inclusion of language that would specify how to treat facilities that were shared with K-12 programs. This specific question was discussed with institution legal counsel and it was determined that specific language regarding that issue should not be included in the policy. The Board and institution legal counsels will be available to answer questions.

BOARD ACTION

I move to approve the first reading of Board Policy I.R. as submitted in Attachment 1.

Moved by _____ Seconded by _____ Carried Yes _____ No _____

PLANNING, POLICY AND GOVERNMENTAL AFFAIRS
APRIL 17, 2014

Idaho State Board of Education
GOVERNING POLICIES AND PROCEDURES
SECTION: VI. FINANCIAL AFFAIRS
Subsection: LR. Campus Security

~~August 2009~~ June 2014

1. An environment of safety and security is critical for institutions to cultivate a climate conducive to knowledge and learning. The Board recognizes a need for consistency among the institutions in regard to firearms. All institutions shall allow concealed carry of firearms and ammunition by holders of licenses described in section 18-3309(2), Idaho Code under the conditions and limitations set out in that section. Any other possession of firearms, including open carry, on institution property is prohibited, unless allowed by the institution as part of a campus security plan, or as part of event or program which has been approved by the chief executive office for the institution.
42. Each institution must develop a campus security plan to maintain the physical security of persons and property on the campus and in full cooperation with state and local law enforcement agencies.
23. Overall responsibility for campus security rests with the chief executive officer of the institution. Each chief executive officer must designate a senior administrative officer and an alternate to serve as liaison between the institution and state and local law enforcement agencies.

THIS PAGE INTENTIONALLY LEFT BLANK

PLANNING, POLICY AND GOVERNMENTAL AFFAIRS
APRIL 17, 2014

SUBJECT

2014 Legislative Update – Board Action

BACKGROUND/DISCUSSION

Several pieces of legislation were passed this year that require Board action.

House Bill 521 – directing school districts to develop a strategic plan and providing funding for training of administrators and school boards. The legislation granted the Board rulemaking authority to establish appropriate procedures, qualifications and guidelines for training providers and to prepare a list of qualified training providers within the state of Idaho. Board staff will work with the State Department of Education, the Idaho Association of School Administrators and the Idaho School Boards Association to develop guidelines and create a list of providers.

Senate Bill 1233 – clarifies which students may be eligible for the Mastery Advancement Scholarship, that professional certificates are eligible for advanced opportunity programs and to provide \$200 for high school juniors and \$400 for high school seniors for dual credit and professional technical certificates. The board will work with the Department of Education to develop necessary procedures and to promulgate rules if necessary to carry out the provisions of the new law.

Senate Bill 1275 – enhances the secondary Agriculture and Natural Resource programs currently offered in Idaho schools and provides start up grants for new programs as well as grants for high quality existing programs. The legislation requires the Board to do the following:

- Request funding for the grant programs in its annual budget request;
- Adopt and implement Idaho quality program standards for agricultural and natural resource education programs offered in any grade 9 through 12 in the areas of instruction, curriculum development, advisory committees, student development and community development;
- Adopt rules to implement the grant programs;
- Establish and administer both grant programs for school districts and public charter schools to begin or to re-establish an agricultural and natural resource education program;
- Develop an application form and criteria to judge each application for both grants.

Board staff will work with the Division of Professional-Technical Education to carry out the provisions of the new law. Division staff will take the lead on establishing the grant program requirements.

Senate Bill 1372 – establishes procedures for sharing student information, procedures collecting new data elements, and requires reporting to the legislature pertaining to the statewide K-12 and postsecondary longitudinal data systems.

PLANNING, POLICY AND GOVERNMENTAL AFFAIRS
APRIL 17, 2014

The law stipulates that all decisions relating to the collection and safeguarding of student data are the responsibility of the executive office of the state board of education. The law requires the Board to do the following:

- Create, publish and make publicly available a data inventory and dictionary or index of data elements with definitions of individual student data fields currently in the student data system;
- Update annually the data inventory and index of data elements;
- Develop, publish and make publicly available policies and procedures to comply with the federal Family Educational Rights And Privacy Act (FERPA) and other relevant privacy laws and policies;
- Restrict access to student data to authorized staff of the Board and the Department and their vendors who require access to perform their duties; the district and the district's vendors who require access; and public postsecondary staff who require access; students and their parents or legal guardians; and authorized staff of other state agencies as required by law and/or defined by interagency data-sharing agreements. All data-sharing agreements must be summarized in a report and submitted by January 15 each year to the Senate Education Committee and the House of Representatives Education Committee;
- Ensure that any contracts that govern databases, online services, assessments or instructional supports that include student data and are outsourced to private vendors, include express provisions that safeguard privacy and security, contain restrictions on secondary uses of student data; and provide for data destruction, including a time frame for data destruction, and penalties for noncompliance;
- Notify the Governor and the Legislature annually of any new student data proposed for inclusion in the state student data system and submit any new "provisional" student data collection to the Governor and the Legislature for their approval within one year in order to make the new student data a permanent requirement through the administrative rules process.
- Develop model policy for districts and requires districts to develop their own data security policy.

The legislation provided funding for a half-time project coordinator. Board staff and the Data Management Council are working to develop a model policy for Board approval. While funding for the project coordinator will not be available until July 1, 2014, the bill contained an emergency clause and will require immediate implementation of the provisions of the law.

Senate Bill 1396 – requires that the Board appoint a review committee consisting of parents, teachers, and administrators representing public and charter schools in all six regions of the state. The committee is to be comprised of 30 people serving staggered four year terms. They will be charged with reviewing and making recommendations to the State Board of Education and the Department of Education to revise or eliminate certain summative computer adaptive test questions. The Board is to determine when committee

PLANNING, POLICY AND GOVERNMENTAL AFFAIRS
APRIL 17, 2014

recommendations are to be submitted provided that there is at least 30 days for the committee to review test questions before the test is administered to students. While the committee is appointed by the Board and the Board has the final decision on which recommendations to implement the legislation requires the Department of Education staff the committee. The Department is currently collecting names from various stakeholder groups to forward to the Board for consideration as Committee members.

IMPACT

Board staff will work with staff of the relevant education agencies to ensure that these new laws are implemented.

BOARD ACTION

This item is for informational purposes only. Any action will be at the Board's discretion.

THIS PAGE INTENTIONALLY LEFT BLANK