

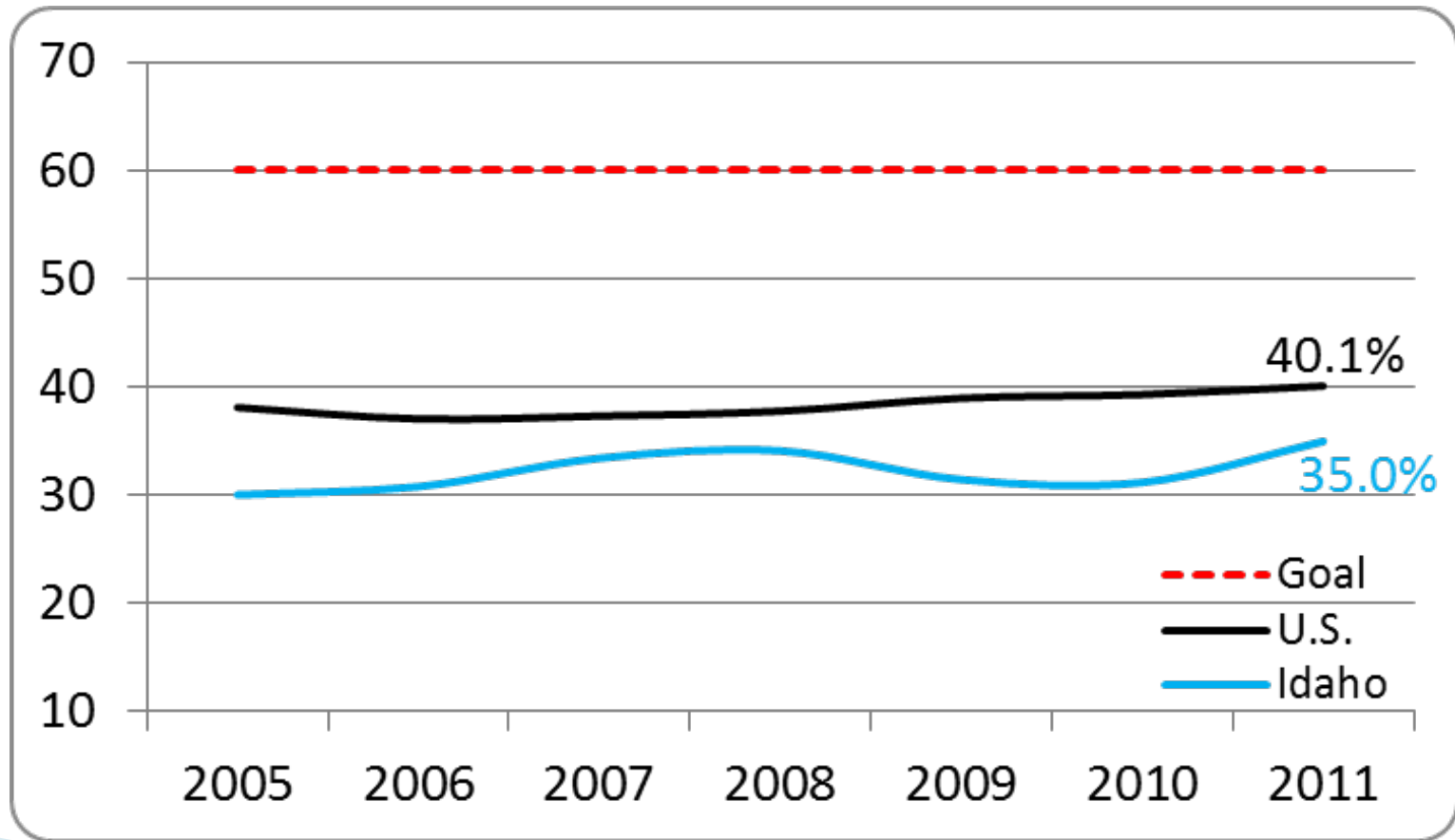
The Education Attainment of Idaho's Young Adults

Idaho Taskforce for Improving Education

January 2013

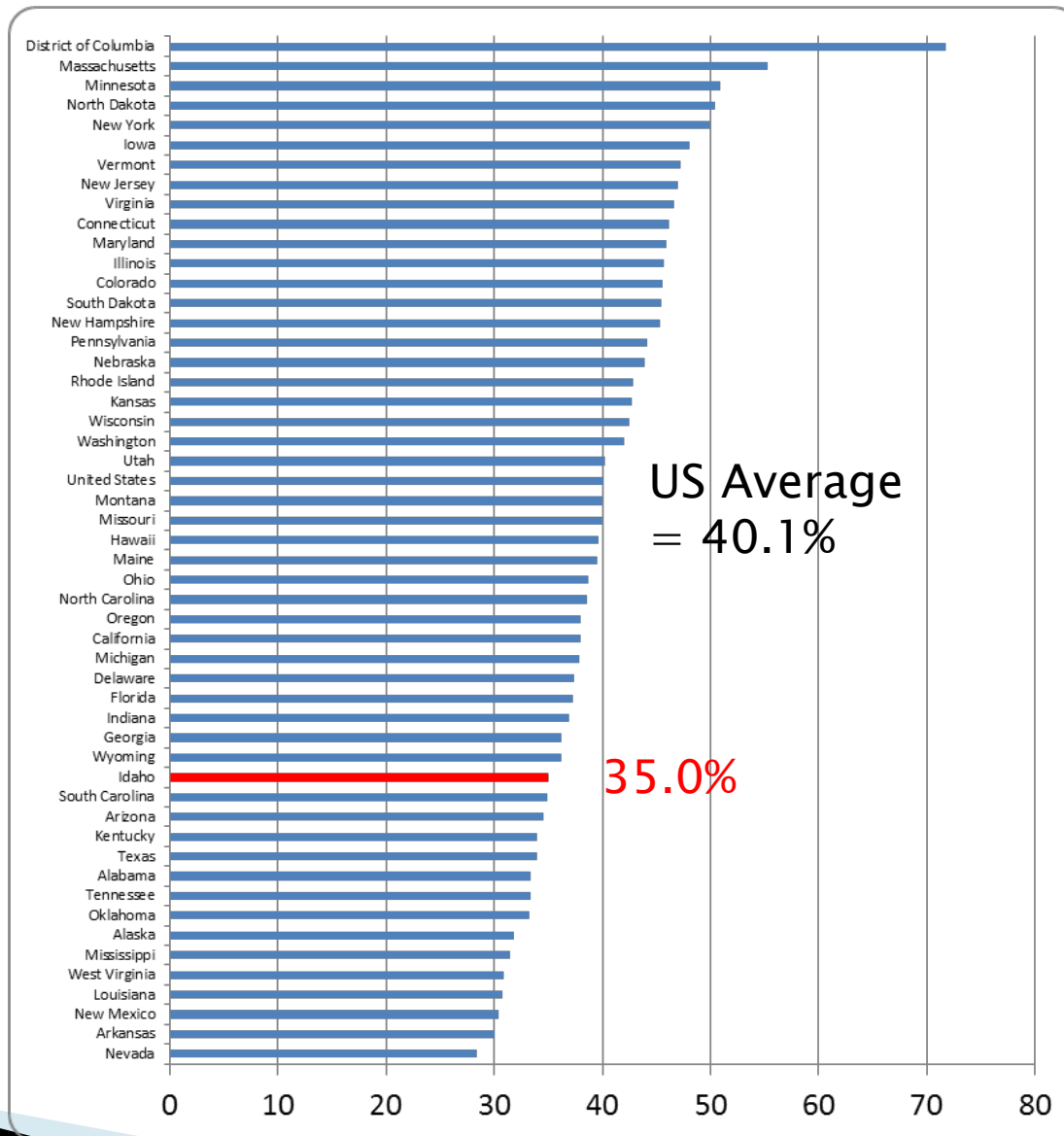
Scott Grothe
Accountability Program Manager
Office of the State Board of Education

25-34 Year Old Idahoans with an Associate's Degree or Higher



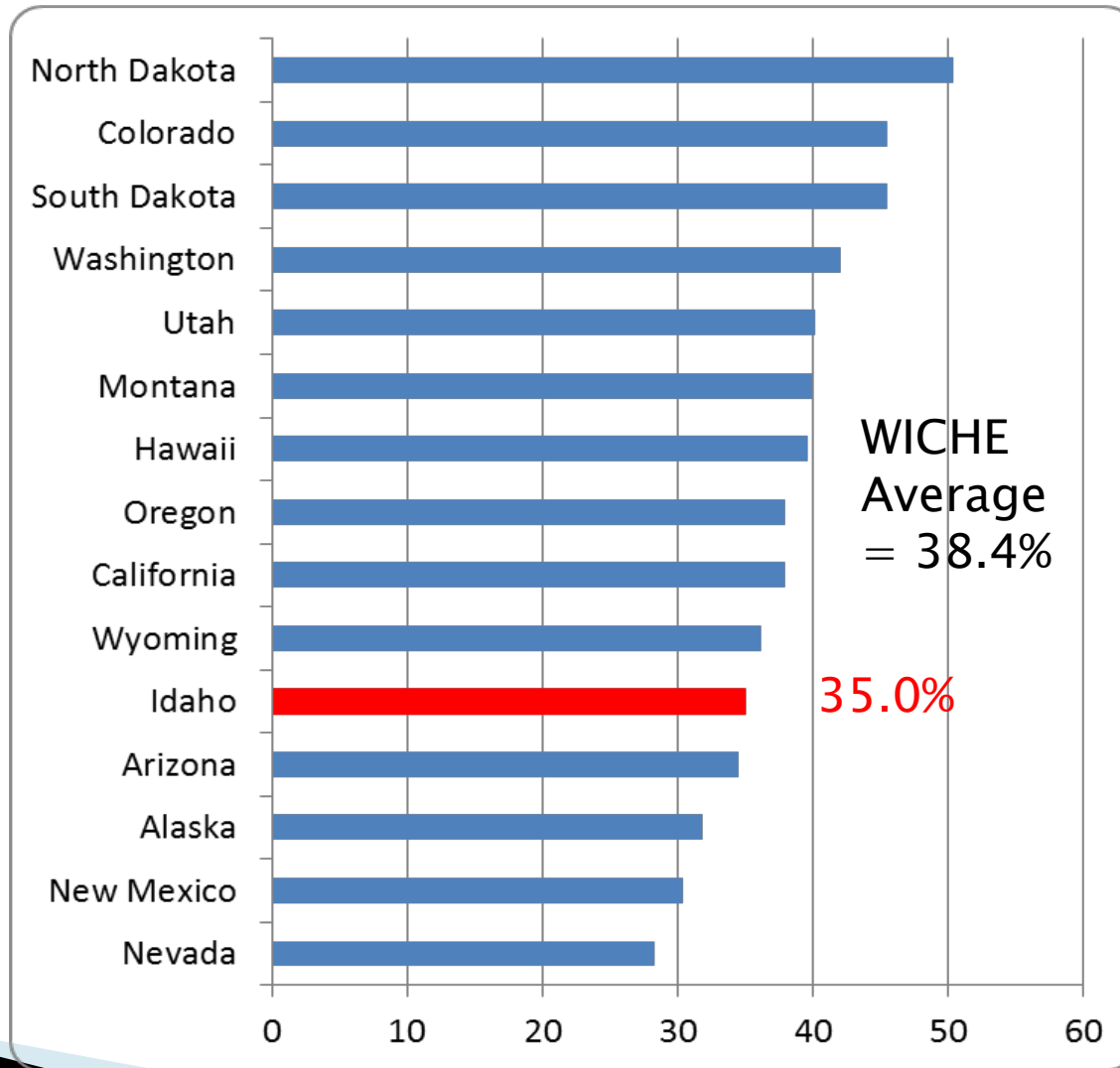
Data Source: US Census Bureau, American Community Survey.

25–34 Year Olds with Associate's or Higher



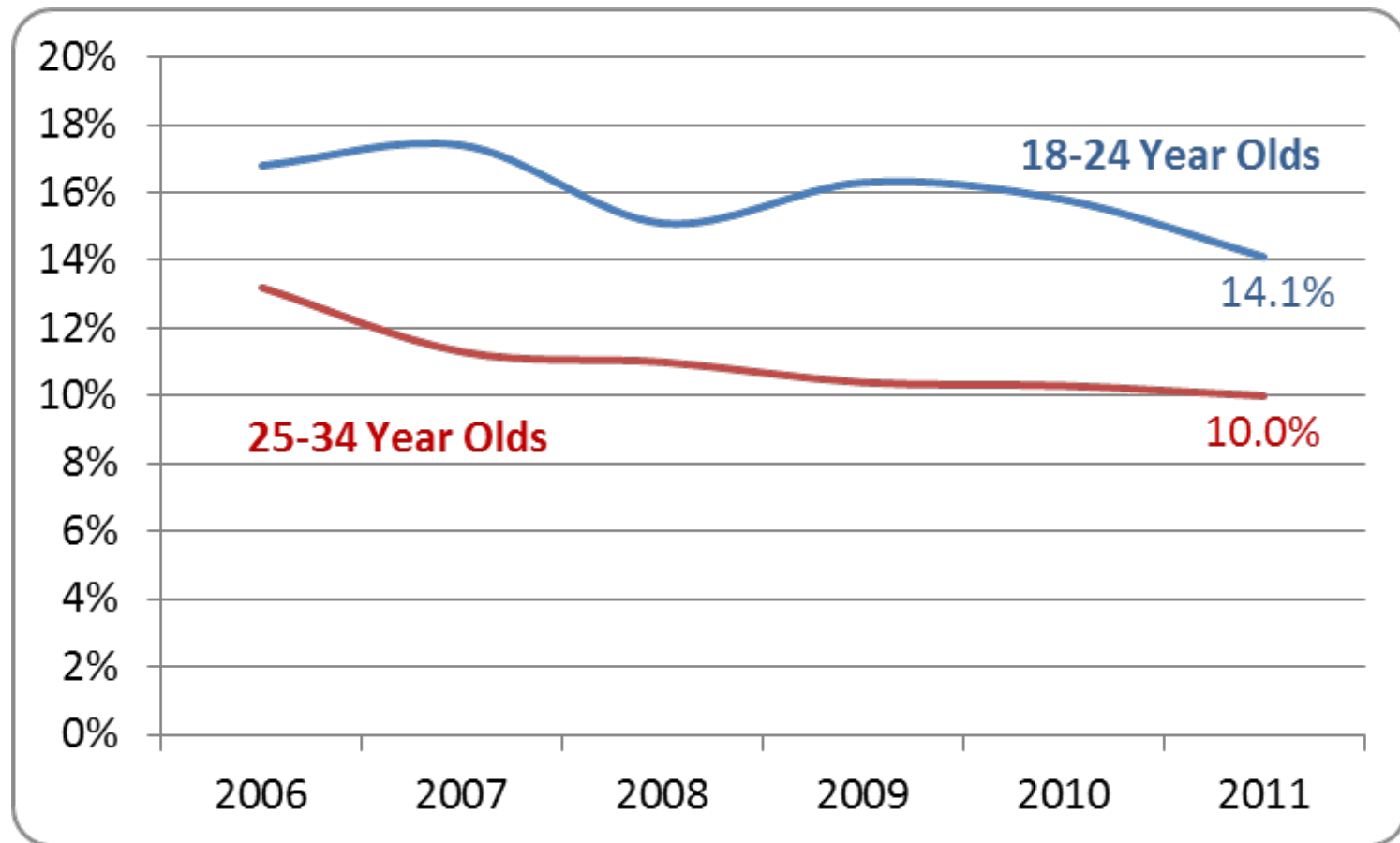
Data Source: US Census Bureau, 2011 American Community Survey.

WICHE States 25-34 Year Olds with Associate's Degree or Higher



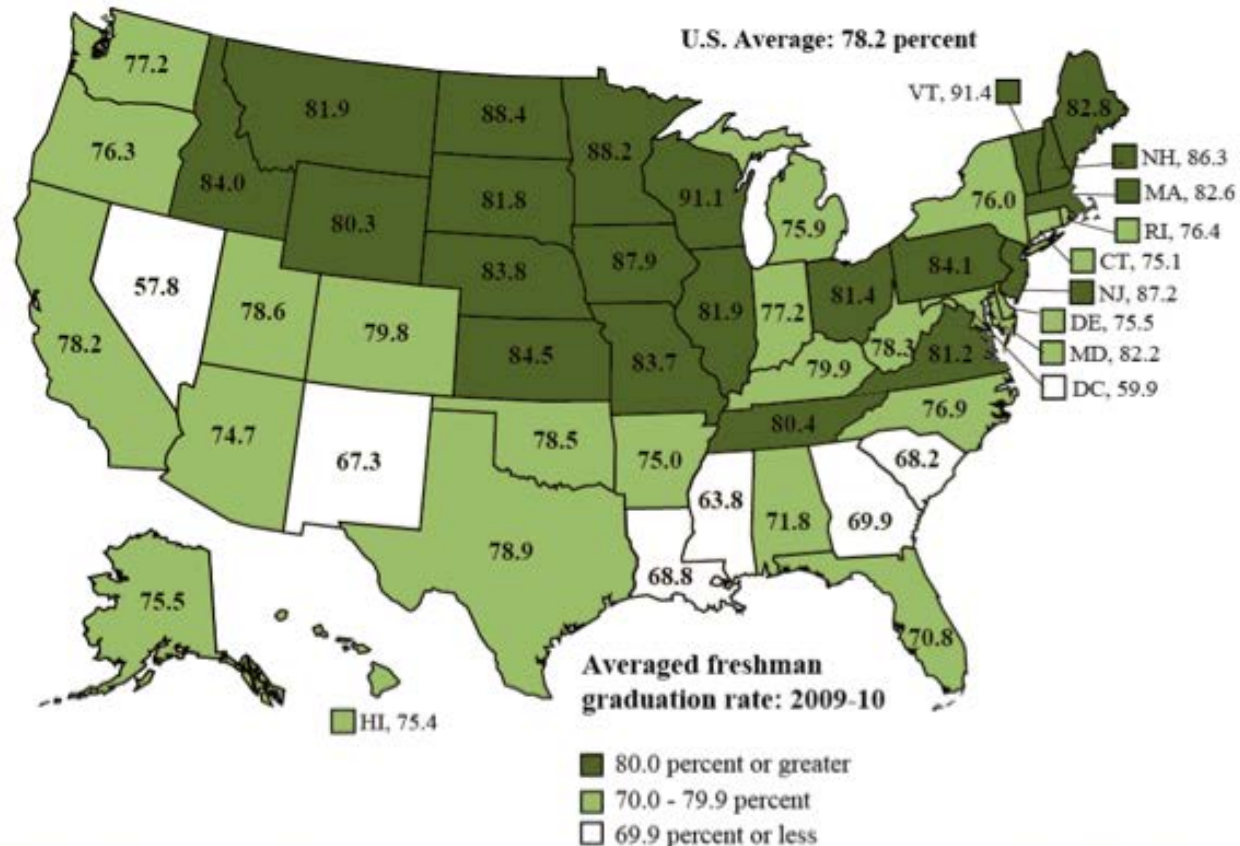
Data Source: US Census Bureau, 2011 American Community Survey.

Young Idaho Adults Without a High School Diploma or Equivalent



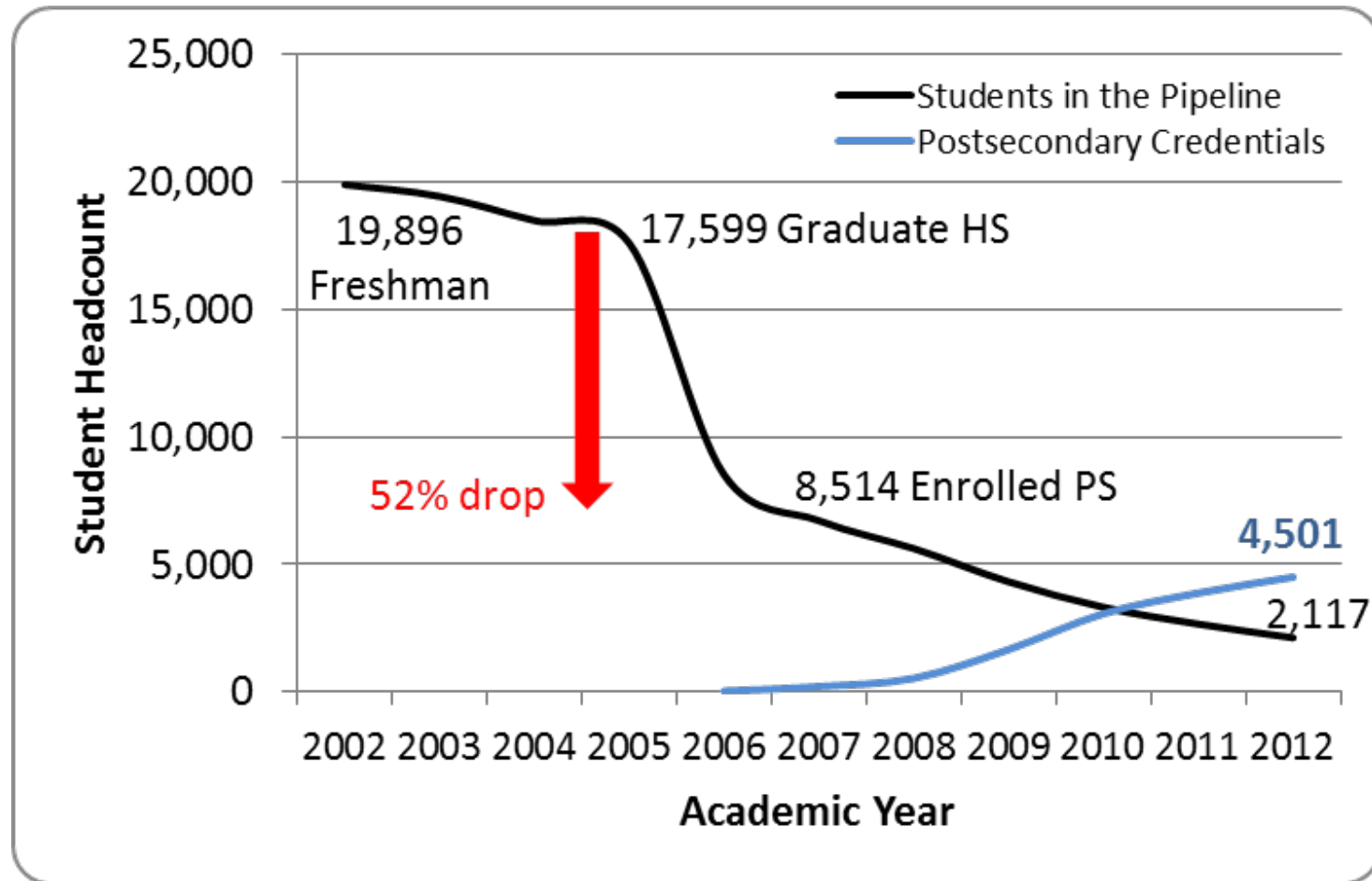
Data Source: US Census Bureau, 2011 American Community Survey.

Estimated Average Freshman Graduation Rate (AFGR) for SY 2009–10



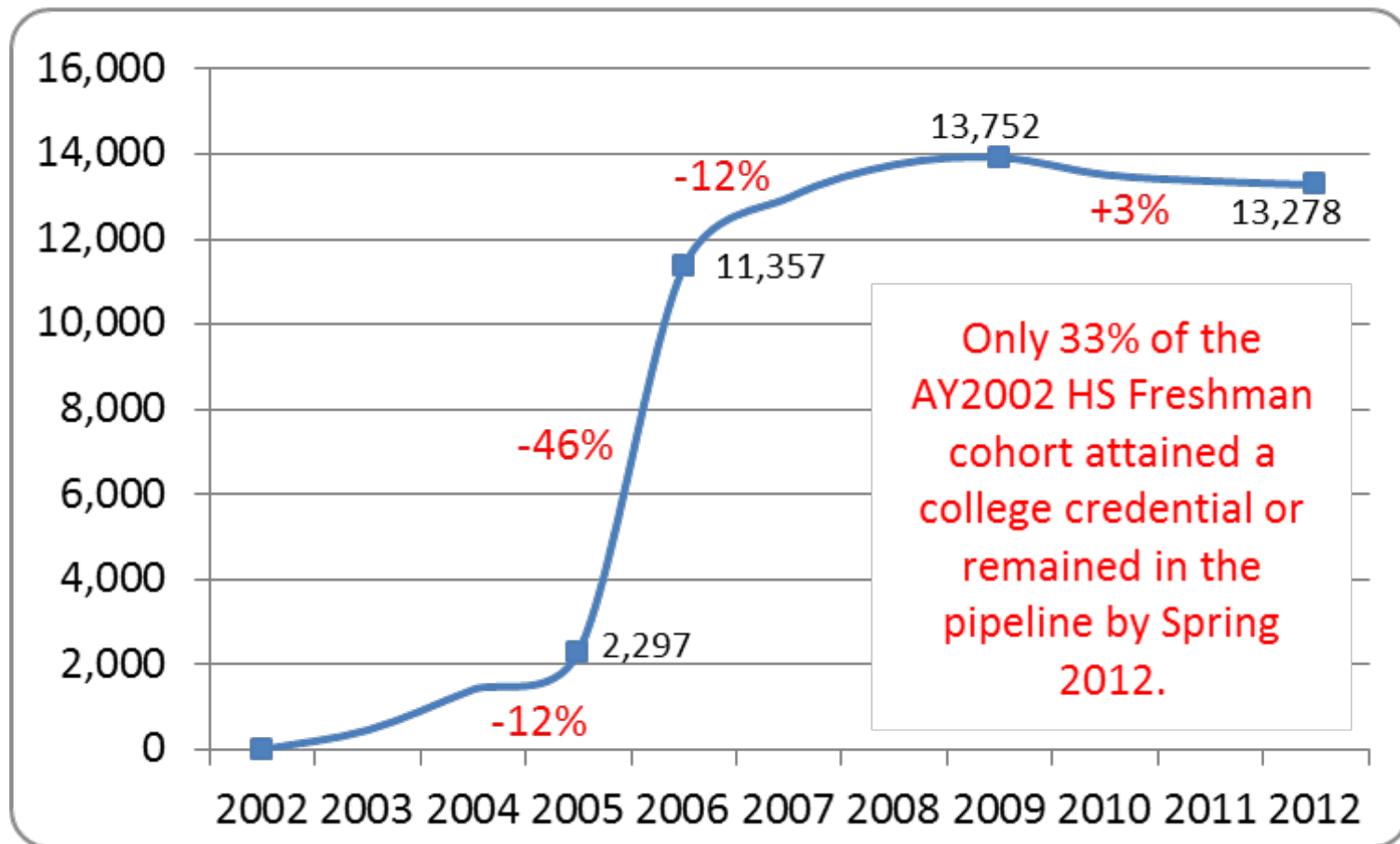
SOURCE: U.S. Department of Education, National Center for Education Statistics, Common Core of Data (CCD), "State Dropout and Completion Data File," 2009-10.

The Retention & Reversion Track of Idaho's 2005 Public High School Graduates



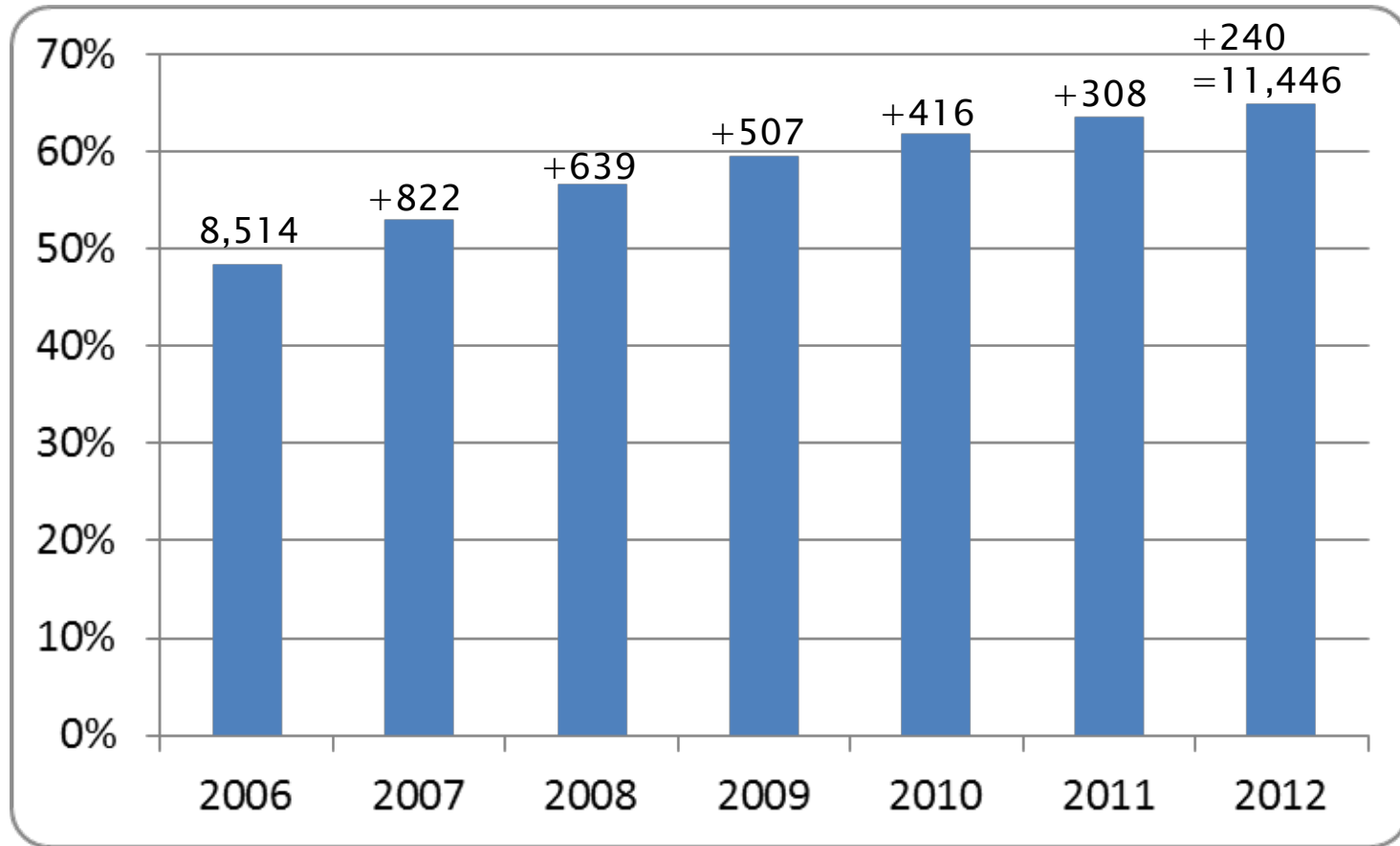
Data Source: US Census Bureau, 2011 American Community Survey; OSBE Institutional Data.

Tracking the 2005 HS Graduate's Education Pipeline Leaks



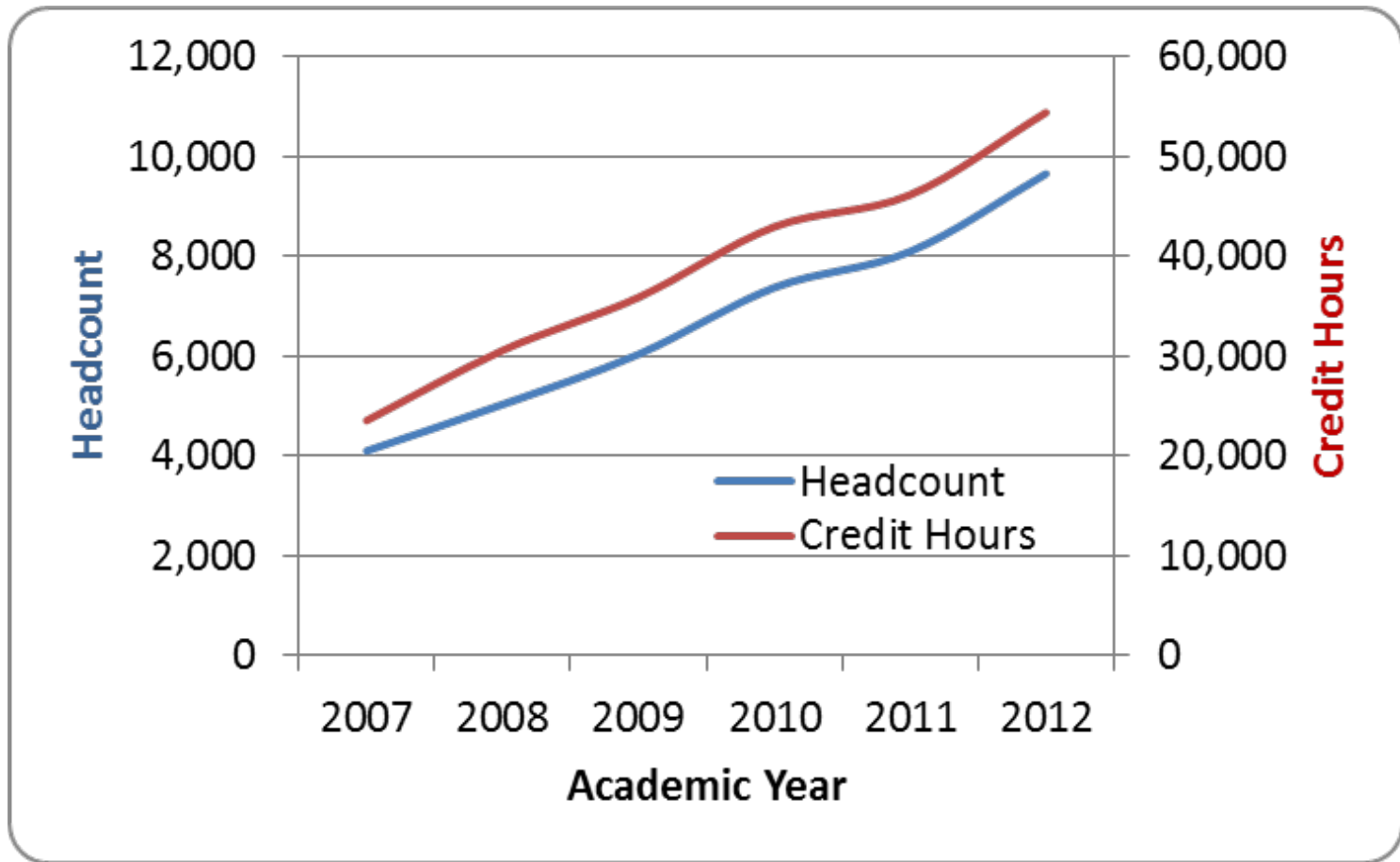
Data Source: US Census Bureau, 2011 American Community Survey; OSBE Institutional Data.

The Postsecondary Go On Rate of Idaho's 17,599 2005 Public High School Graduates Through Time



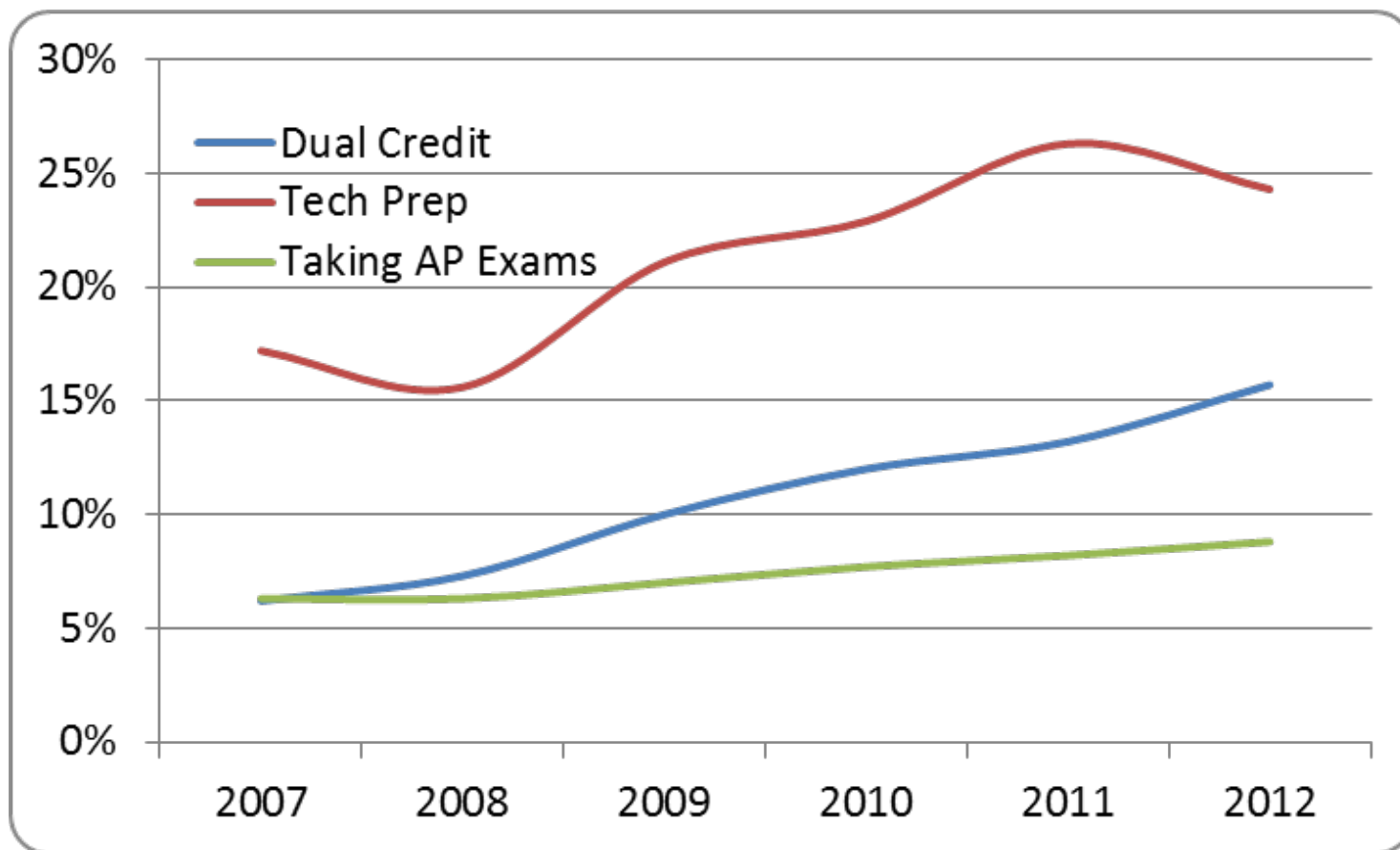
Data Source: US Census Bureau, 2011 American Community Survey; OSBE Institutional Data.

Statewide Dual Credit Annual Headcount & Credit Hours Taken



Data Source: 2007-2011 OSBE Dual Credit Report; 2012 DFM Performance Report.

Percent of High School Students Taking Advantage of Dual Credit, Tech Prep, & AP Postsecondary Options



Data Source: SDE Statewide 10th, 11th, & 12th Grade Enrollment: OSBE Dual Credit Report; PTE Tech Prep data; & CollegeBoard Advanced Placement data.