

# Go-On Readiness Comparisons

Idaho, Mississippi, Alaska, Alabama, Georgia, & Wyoming

## Table of Contents

Information from Achieve .....	4
College and Career Ready Policy .....	4
Equity Imperative.....	5
College Expectations .....	6
Steps in Making College and Career Readiness a Priority .....	7
PSAT/NMSQY Summary Report Data .....	8
Demographics for High School Junior Taking the PSAT/NMSQT .....	8
Higher Education Information .....	9
Go-On Rates.....	9
Charts of Go-On Rates by State.....	10
Alabama .....	10
Alaska .....	11
Georgia.....	12
Idaho .....	13

Mississippi ..... 14

Wyoming..... 15

## Information from Achieve

Published at <http://www.achieve.org>

<b>College and Career Ready Policy</b>						
	Idaho	Mississippi	Alaska	Alabama	Georgia	Wyoming
Aligns high school standards with the expectations of college and careers.	Yes	Yes	Yes	Yes	Yes	Yes
Aligns high school graduation requirements with college and career ready expectations.		Yes		Yes	Yes	
Developed college and career ready assessment systems				Yes	Yes	Yes
Developed a P-20 longitudinal data system	Yes		Yes	Yes	Yes	Yes
Developed accountability and reporting systems that promote college and career readiness						

### Equity Imperative

	Idaho	Mississippi	Alaska	Alabama	Georgia	Wyoming
4 <sup>th</sup> Grade Math Proficiency	All: 39% White: 44% Black: N/R Hispanic: 17% Low SES: 27%	All: 25% White: 38% Black: 10% Hispanic: 22% Low SES: 17%	All: 37% White: 50% Black: 15% Hispanic: 36% Low SES: 22%	All: 27% White: 37% Black: 9% Hispanic: 21% Low SES: 15%	All: 37% White: 51% Black: 18% Hispanic: 29% Low SES: 21%	All: 44% White: 47% Black: N/R Hispanic: 31% Low SES: 32%
8 <sup>th</sup> Grade Reading Proficiency	All: 34% White: 37% Black: N/R Hispanic: 17% Low SES: 23%	All: 21% White: 33% Black: 9% Hispanic: N/R Low SES: 13%	All: 31% White: 42% Black: 17% Hispanic: 24% Low SES: 16%	All: 26% White: 34% Black: 11% Hispanic: 16% Low SES: 15%	All: 28% White: 38% Black: 14% Hispanic: 21% Low SES: 16%	All: 38% White: 40% Black: N/R Hispanic: 26% Low SES: 26%
High School Graduation Rate	All: 72% White: 76% Black: 44% Hispanic: 64% Low SES: N/R	All: 62% White: 67% Black: 58% Hispanic: 52% Low SES: N/R	All: 69% White: 74% Black: 64% Hispanic: 64% Low SES: N/R	All: 69% White: 75% Black: 60% Hispanic: 57% Low SES: N/R	All: 63% White: 73% Black: 55% Hispanic: 57% Low SES: N/R	All: 74% White: 75% Black: 33% Hispanic: N/R Low SES: N/R
College Completion Rate	All: 43% White: 45% Black: 22% Hispanic: 31% Low SES: N/R	All: 49% White: 55% Black: 39% Hispanic: 45% Low SES: N/R	All: 22% White: 25% Black: 21% Hispanic: 23% Low SES: N/R	All: 47% White: 54% Black: 35% Hispanic: 37% Low SES: N/R	All: 48% White: 49% Black: 43% Hispanic: 45% Low SES: N/R	All: 57% White: 58% Black: 54% Hispanic: 49% Low SES: N/R
Percentage of Students at Risk of Dropping Out	All: 5% White: 5% Black: N/R Hispanic: 7% Low SES: N/R	All: 9% White: 8% Black: 9% Hispanic: N/R Low SES: N/R	All: 6% White: 4% Black: N/R Hispanic: N/R Low SES: N/R American Indian: 10%	All: 8% White: 6% Black: 10% Hispanic: N/R Low SES: N/R	All: 7% White: 6% Black: N/R Hispanic: 14% Low SES: N/R	All: 7% White: 6% Black: N/R Hispanic: 6% Low SES: N/R

\*\* N/R indicated that the information was not reported

### College Expectations

	Idaho	Mississippi	Alaska	Alabama	Georgia	Wyoming
In need of Remediation	N/R	N/R	N/R	Two-Year Colleges: 44% Four-Year Colleges: 18%	Both Two & Four-Year Colleges: 24%	Two-Year College: 49% Four-Year College: N/R
Percentage of Students Who Enter and Earn Their Degrees	43%	49%	22%	47%	48%	57%
** N/R indicates that the information was not reported.						

### Steps in Making College and Career Readiness a Priority

	Idaho	Mississippi	Alaska	Alabama	Georgia	Wyoming
Participates in Common Core State Standards	Yes	Yes	Yes	Yes	Yes	Yes
Smarter Balanced Assessment Consortium (SBAC)	Yes	No	No	No	No	Yes
Number of State Actions met for the Data Quality Campaign (10 total)	4	2	4	4	7	10
Raised High School Graduation Requirements to the College and Career Ready Level.	No	Yes	No	Yes	Yes	No
Partnership for Assessment of Readiness for College and Careers (PARCC) Participant	No	Yes	No	Yes	Yes	No
Tracking Indicators of College and Career Readiness.	Needs improvement	Needs improvement	Needs improvement	Needs improvement	Yes	Needs improvement
Administers WorkKeys Assessment to All Students as Part of High School Assessment System	No	No	Yes	Yes	No	No
Requires All 11 <sup>th</sup> Graders to take the ACT	No	No	No	Yes	No	Yes
Lead State Partner in Development of Next Generation Science Standards	No	No	No	No	Yes	No

## PSAT/NMSQY Summary Report Data

<b>Demographics for High School Junior Taking the PSAT/NMSQT</b>						
	Idaho	Mississippi	Alaska	Alabama	Georgia	Wyoming
Total Students	8,088	5,835	2,279	12,473	34,046	1,274
College Ready	51.4%	53.4%	54.3%	56.6%	54.6%	55.6%
Males	3,753 or 46.5%	2,613 or 44.9%	1,019 or 44.9%	5,661 or 45.5%	15,925 or 47%	563 or 44.3%
Females	4,319 or 53.5%	3,207 or 55.1%	1,253 or 55.1%	6,792 or 54.5%	17,970 or 53%	708 or 55.7%
American Indian or Alaska Native	107 or 1.4%	14 or 0.2%	238 or 11.2%	95 or 0.8%	110 or 0.3%	31 or 2.5%
Asian, Asian American, or Pacific Islander	300 or 3.8%	159 or 2.8%	242 or 11.4%	496 or 4.1%	2,477 or 7.6%	34 or 2.7%
Black or African American	137 or 1.7%	1,264 or 21.9%	54 or 2.5%	2,183 or 17.8%	8,905 or 27.2%	13 or 1.0%
Hispanic, Latino, or Latin American	700 or 8.9%	115 or 2.0%	91 or 4.3%	317 or 2.6%	2,091 or 6.4%	71 or 5.7%
White	6,472 or 82.5%	4,120 or 71.4%	1,443 or 67.9%	8,924 or 73%	18,242 or 55.6%	1,086 or 86.9%
Other	132 or 1.7%	98 or 1.7%	56 or 2.6%	217 or 1.8%	961 or 2.9%	15 or 1.2%



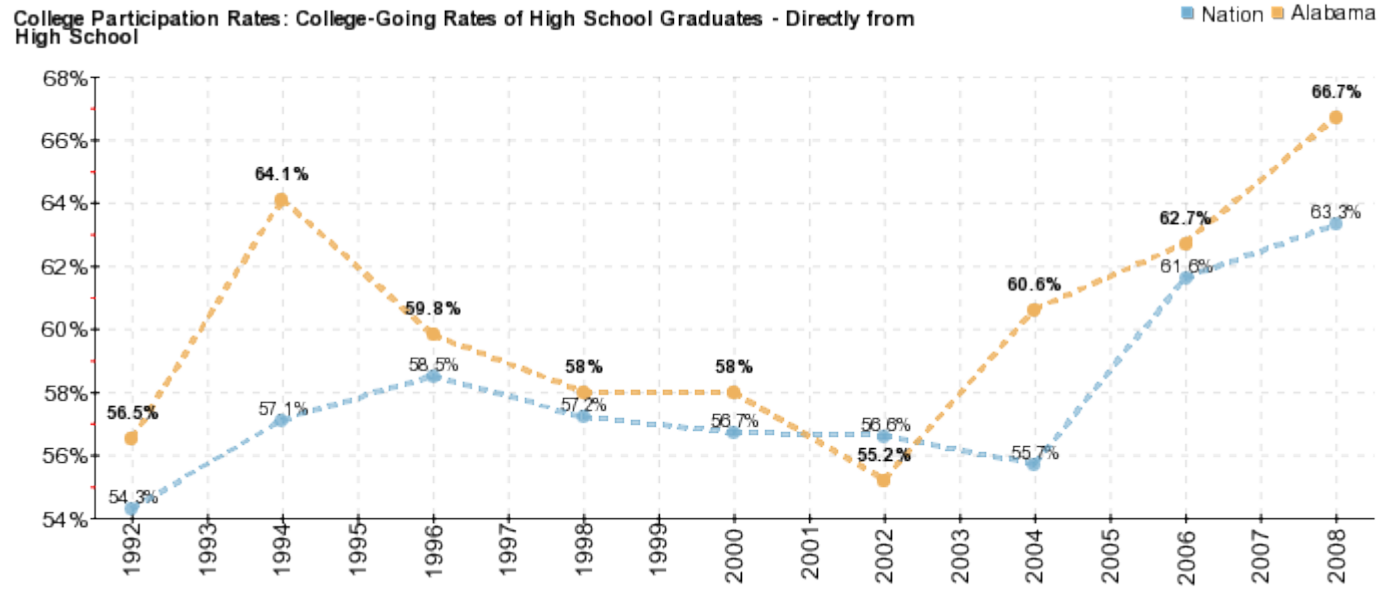
## Higher Education Information

From [www.higheredinfo.org](http://www.higheredinfo.org)

<b>Go-On Rates</b>						
	<b>Idaho</b>	<b>Mississippi</b>	<b>Alaska</b>	<b>Alabama</b>	<b>Georgia</b>	<b>Wyoming</b>
Percentage of High School Graduates Directly Going to College	49.1%	77.4%	45.7%	66.7%	69.6%	59.4%
Number of High School Graduates 2008	17,475	28,150	8,053	45,922	91,078	5,494
First-Time Freshmen Directly Enrolled from High School Anywhere in the US – Fall 2008	8,578	21,786	3,682	30,616	63,374	3,262

## Charts of Go-On Rates by State

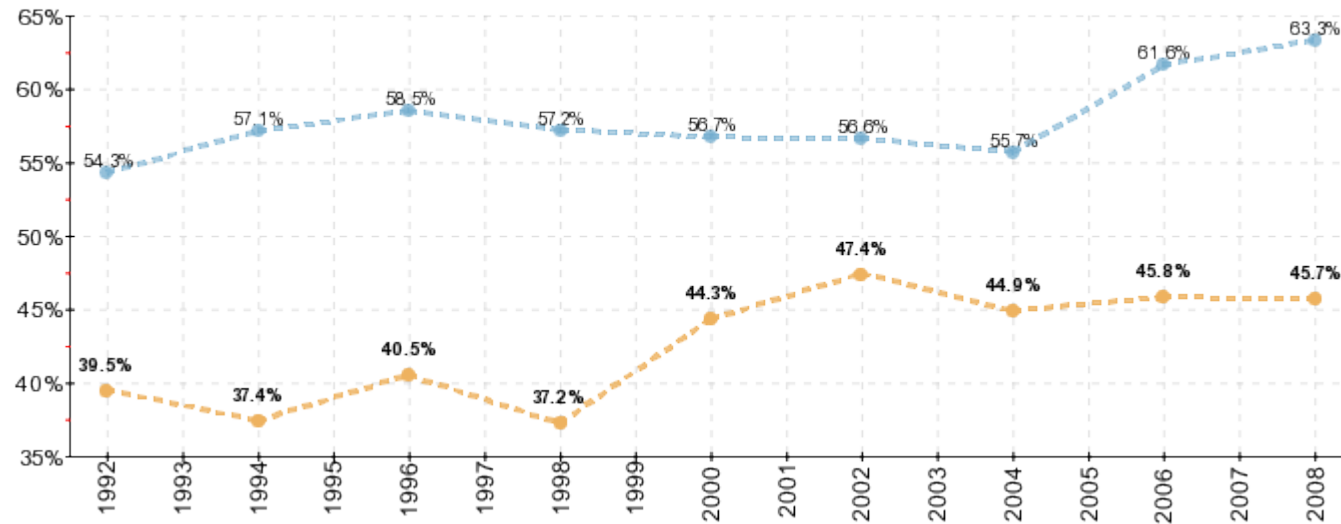
### Alabama



## Alaska

College Participation Rates: College-Going Rates of High School Graduates - Directly from High School

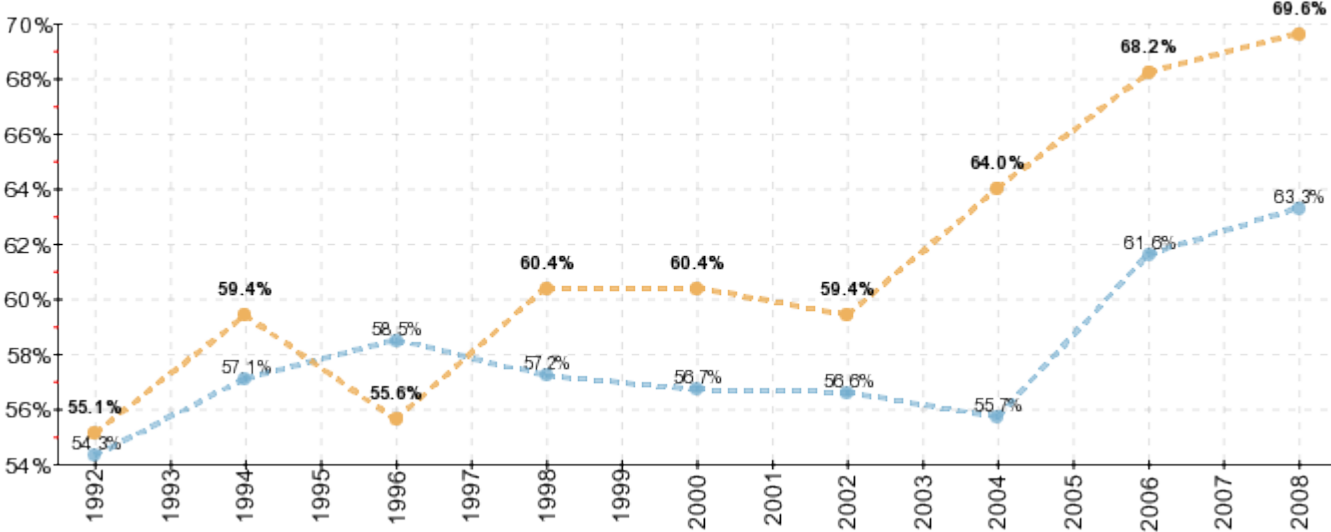
■ Nation ■ Alaska



# Georgia

College Participation Rates: College-Going Rates of High School Graduates - Directly from High School

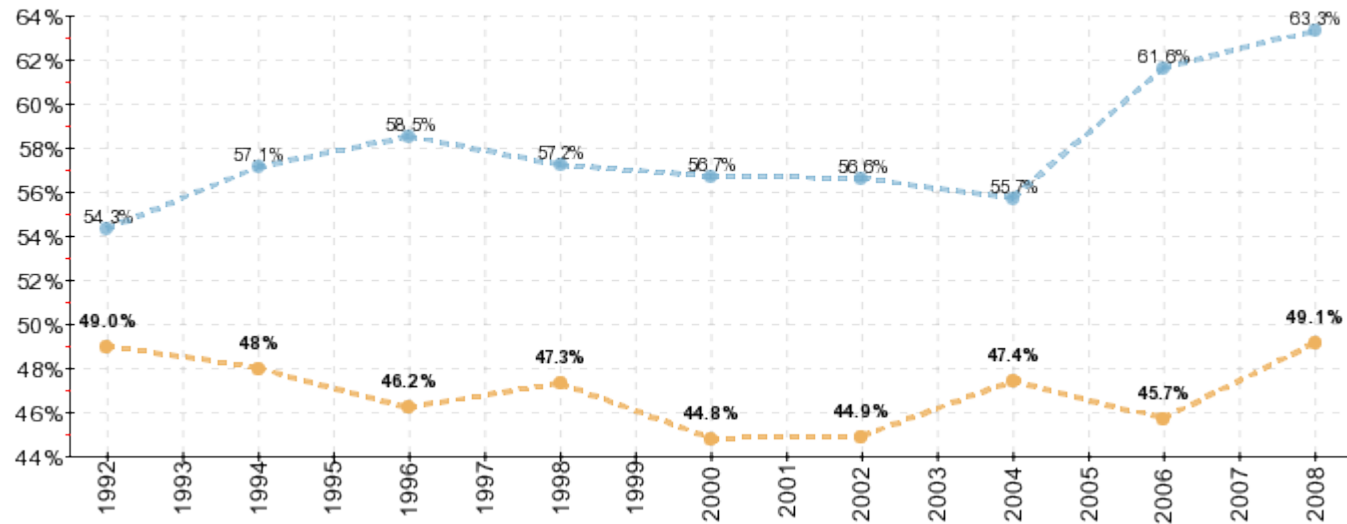
■ Nation ■ Georgia



## Idaho

College Participation Rates: College-Going Rates of High School Graduates - Directly from High School

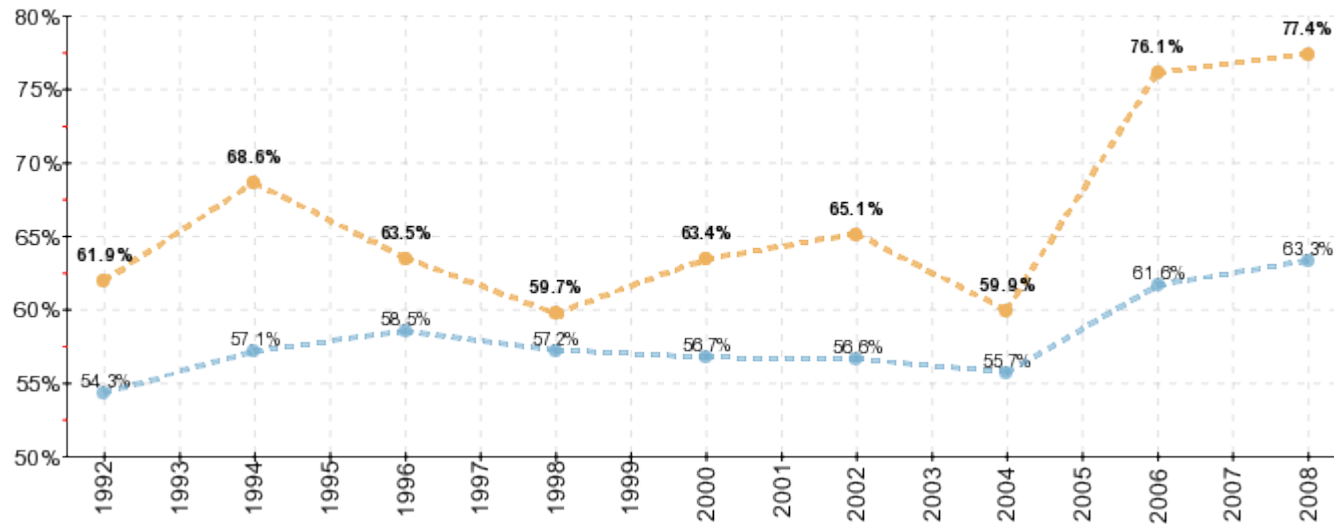
■ Nation ■ Idaho



## Mississippi

College Participation Rates: College-Going Rates of High School Graduates - Directly from High School

■ Nation ■ Mississippi



## Wyoming

College Participation Rates: College-Going Rates of High School Graduates - Directly from High School

■ Nation ■ Wyoming

