

**Outcomes-Based Funding
2018-2019 Working Group
Structure for Oversight and Coordination**

Basic Concept

- With many players involved, it will be important to use multiple teams to work various action items (as opposed to relying on one mega-team).
- Oversight, coordination, and liaison activities will be easier if the organization and duties are as clear as possible.
- Chain of command above the Oversight Committee (BAHR) is already clear—line runs to the Board, which, in turn, has clear line of authority to the Presidents.

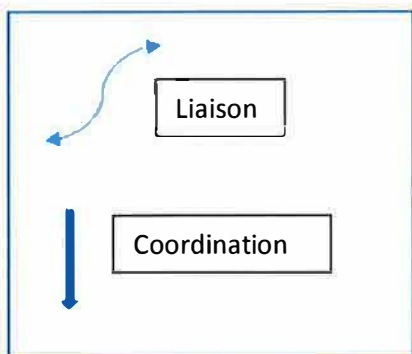
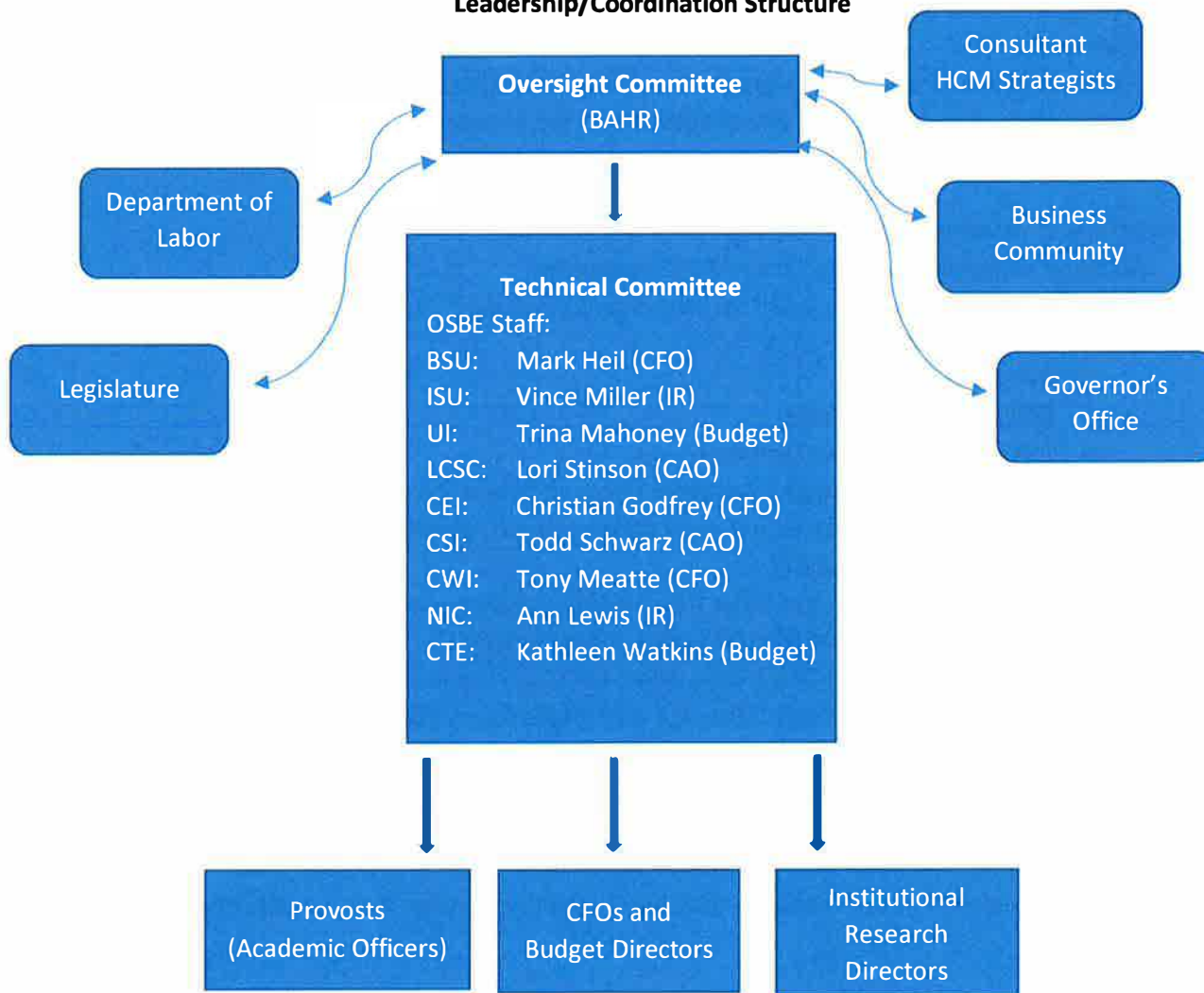
Characteristics of Attached Model

- Supports engagement of CUs, CCs, and CTE operations.
- Four primary “types” of players on the Technical Committee (TC):
 - Financial Officers
 - Budget Directors
 - Chief Academic Officers
 - Institutional Research Directors
- Ongoing, frequent coordination takes place between TC and the supporting functional teams
- As needed, liaison takes place with outside stakeholders (Legislature, DOL, DFM, Governor’s Office, and Business Community)
- An outside consultant (Scott Boelscher from HCM Strategists—national authority on OBF) assists OC and TC in concept development and assessment of models.
- Students and Student Affairs (Registrars, Admissions) can link in through Academic Officers.
- Each institution has one representative, but each of the four functional specialties has double coverage.
- All of the suggested players have working knowledge of the issues
- OSBE staff assists in coordination (Financial, Academic, and Research Officers) of activities.
- Model provides ready access to institutions’ modeling and simulation capabilities.
- Oversight Committee retains subpoena authority to bring in other stakeholders, if/when needed.

Next Steps?

- Review model, bounce concept off BAHR Committee members.
- Touch base with SBOE Executive Committee.
- Invite participation by designated Technical Committee members.
- Staff works up draft model, attributes/weights multi-year phase-in planning for initial OC and TC review.

**Outcomes-Based Funding
2018-2019 Working Group
Leadership/Coordination Structure**



Proposed Outcomes Based Funding Model

Change the percent of base budget number and the new state funding number. Click on the "Calculate Amount" button. The net impact will be calculated.

Percent of base budget
3.0%
New State Funding
\$ 5,000,000

Calculate Amount

Total OBF \$ 13,686,600 BSU Net \$ 3,470,391 ISU Net \$ 227,907 UI Net \$ 677,524 LCSC Net \$ 624,179

College and Universities

Metric	Weight	Amount	BSU		ISU		UI		LCSC		Total CU		
			Data	Allocation	Data	Allocation	Data	Allocation	Data	Allocation	Data	%	Allocation
Completion		\$ 1,150											
1-year equivalent (30 or more credits after degree completion)	0.10	\$ 115	81	\$ 9,315	73	\$ 8,395	63	\$ 7,245	26	\$ 2,990	243	1.1%	\$ 27,944
>=1-year cert.	0.25	\$ 287	413	\$ 118,732	34	\$ 9,775		\$ -		\$ -	447	2.1%	\$ 128,506
Associate	0.50	\$ 575	114	\$ 65,547	192	\$ 110,395		\$ -	316	\$ 181,691	622	2.9%	\$ 357,633
Bachelor	1.00	\$ 1,150	3,141	\$ 3,611,976	1,139	\$ 1,309,787	1,651	\$ 1,898,558	523	\$ 601,421	6,454	29.9%	\$ 7,421,742
Master	0.75	\$ 862	791	\$ 682,205	387	\$ 333,771	508	\$ 438,129		\$ -	1,686	7.8%	\$ 1,454,105
Doctorate/Professional	0.50	\$ 575	36	\$ 20,699	160	\$ 91,996	165	\$ 94,870		\$ -	361	1.7%	\$ 207,565
High Impact Award Multiplier by Completion													
>=1 year certificate	0.33	\$ 95	271	\$ 25,710	29	\$ 2,751	0	\$ -	0	\$ -	300	1.4%	\$ 28,461
Associate	0.33	\$ 190	1	\$ 190	72	\$ 13,661	0	\$ -	29	\$ 5,502	102	0.5%	\$ 19,354
Bachelor	0.33	\$ 379	2,023	\$ 767,691	852	\$ 323,318	957	\$ 363,164	338	\$ 128,265	4,170	19.3%	\$ 1,582,439
Master	0.33	\$ 285	567	\$ 161,375	352	\$ 100,183	405	\$ 115,268	0	\$ -	1,324	6.1%	\$ 376,825
Doctorate/Professional	0.33	\$ 190	34	\$ 6,451	149	\$ 28,271	65	\$ 12,333	0	\$ -	248	1.2%	\$ 47,056
Low SES Multiplier (associate or higher)													
Pell eligible (associate)	0.33	\$ 190	86	\$ 16,318	58	\$ 11,005		\$ -	200	\$ 37,948	344	1.6%	\$ 65,271
Pell eligible (bachelor)	0.33	\$ 379	1,737	\$ 659,160	397	\$ 150,654	822	\$ 311,934	306	\$ 116,121	3,262	15.1%	\$ 1,237,869
On-Time Graduation Multiplier (Idaho Residents)													
Associate On-Time	0.33	\$ 190	18	\$ 3,415	68	\$ 12,902		\$ -	59	\$ 11,195	145	0.7%	\$ 27,512
Bachelor On-Time	0.33	\$ 379	833	\$ 316,108	305	\$ 115,742	574	\$ 217,823	144	\$ 54,645	1,856	8.6%	\$ 704,318
Total Outcomes Based Funding			10,146	\$ 6,464,891	4,267	\$ 2,622,607	5,210	\$ 3,459,324	1,941	\$ 1,139,779	21,564	100.0%	\$ 13,686,600
Total Base Budget Funding				\$ 2,994,500		\$ 2,394,700		\$ 2,781,800		\$ 515,600			\$ 8,686,600
Total New State Funding													\$ 5,000,000
Net Change (OBF Allocation)				\$ 3,470,391		\$ 227,907		\$ 677,524		\$ 624,179			\$ 5,000,000

1-year equivalent (30 or more credits after degree completion)

Any student who has completed at least 30 credits from a single Idaho institution who completes at a different Idaho institution. These funds would be sent to the originating institution at the time of completion of an eligible credential

>=1-year cert.

An academic certificate equal to one year or more

Associate

A credential awarded for completion of requirements entailing at least two but normally less than four years of full-time academic work

Bachelor

A credential awarded for completion of requirements entailing at least four years of full-time academic work

Master

A credential awarded for completion of requirements entailing at least one but normally not more than two years of full-time academic work beyond the baccalaureate degree, including any required research

Doctorate/Professional

A credential awarded for completion of requirements entailing at least three years of full-time academic work beyond the baccalaureate degree, including any required research

High Impact Award Multiplier by Completion

Awarded credentials in fields identified as strategic priorities for Idaho jobs (e.g. health, STEM, education, business). This multiplier is awarded at the time of completion

Low SES Multiplier (associate or higher)

Students who have completed credentials that were eligible for federal Pell Grant monies during their time as an enrolled student. Federal Pell Grants usually are awarded only to undergraduate students who display exceptional financial need and have not earned a bachelor's, graduate, or professional degree. This multiplier is awarded at the time of completion

On-Time Graduation Multiplier (Idaho Residents)

Idaho students who have completed either an associate or bachelor degree in two or four years, respectively, of attendance upon enrolling after high school graduation

At-Risk Funding

Funds collected from institution existing base funding to be redistributed based on the Outcomes Based Funding model

Guiding Principles
Outcomes-Based Funding Working Group 2018-2019

- OBF is a multi-year Board effort to fund higher education institutions in a way that incentivizes completion of student certificates and degrees to prepare them for successful careers and lives. The approach is being used to some degree in many other states.
- OBF aims to make progress on the 60% by funding institutions as they complete students rather than credit accumulation.
- OBF is not a cost model, it is a goal model. Allocations of funding are based on what the state needs (baccalaureate and associate degrees) and not on the most expensive programs (doctoral and professional).
- A Technical Committee, made up of representatives from the institutions, Idaho government, business, and national experts developed the formula and identified metrics.
- A separate model for College and Universities, Community Colleges, and Career-Technical Education. These three models are independently funded and do not compete for resources.
- Applies to academic and career technical programs.
- Permanently replaces the Enrollment Workload Adjustment (EWA) formula.
- Includes weighting for key programs tied to economic needs of Idaho: (e.g. STEM, health professions, business, and education) called High Impact Multipliers.
- Includes weighting for low-income populations called At-Risk Multipliers.
- Includes weighting for On-Time completion of associate and bachelor degrees for Idaho residents.
- Three-year phase-in of increased state general funds and at-risk Base funding from the institutions.