




Reporting Data for E-rate Funding

Daniel Vogt, E-rate Program Coordinator

Resources Added to OSBE



All Topics ▾



HomeBoard Facts ▾Board Meetings ▾Board Policies & Rules ▾Education Initiatives ▾Idaho Scholarships ▾Public Higher Education ▾Private Higher Education ▾**K-12 Education ▾**Data & Research ▾News & Events ▾

⊕ Educator Effectiveness

- Educator Evaluation Reviews
- Educator Preparation Programs
- Idaho Educator Pipeline
- Rural and Underserved Educator Incentive Program
- Administrative Certificate Renewal Requirement
- Idaho Educator Mentoring
- Accelerating Math Learning Collaborative
- Registered Teacher Apprenticeship Program

+ Advanced Opportunities

- Advanced Placement
- College Level Examination Program
- Dual Credit
- Technical Competency Credit

📌 District / Charter School Planning

- Qualified Trainers
- Literacy Intervention Tools
- Idaho School District and Community College Trustee Zone Equalization

📅 K-12 Accountability

⚡ Broadband and E-rate Services

ISEE Idaho System for Educational Excellence

Public School Districts

Idaho Public Charter Schools by Region

Idaho Public Charter School Commission

High School Graduation Requirements

Concussion Policy

Scholarship Idaho

Upcoming Events

Board Meeting	Innovation School Overview
---------------	----------------------------

Purpose of Presentation



- Guidance for E-rate Funding Year 2024
 - When to report student data for E-rate funding.
 - Which student data to report.
 - Note: this guidance valid only for this year



E-rate Eligible Costs

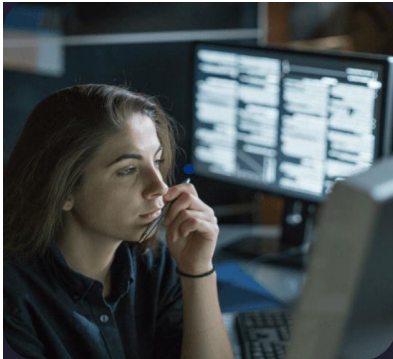


Category 1



**Monthly Service
Non-Recurring Costs
Special Construction**

Category 2



**Networking Hardware
Managed Services
Cabling Installation**

When Are We?



Presently — E-rate Funding Year 2023

July 1st, 2023 — June 30th, 2024

School Year 23-24

We are currently using the hardware/services we requested funding for in Spring 2023.

We are also determining what hardware/services we need for **Next Year** and will request funding for by Spring 2024.

How much will E-rate fund for School Year 24-25?



Next Year — E-rate Funding Year 2024

July 1st, 2024 — June 30th, 2025

School Year 24-25

What Is My SY24-25 Discount?



E-rate Discount Matrix		
	Category 1 / 2	
FRL Percentage	Urban	Rural
Less than 1%	20%	25%
1% to 19%	40%	50%
20% to 34%	50%	60%
35% to 49%	60%	70%
50% to 74%	80%	80%
75% to 100%	90% / 85%	90% / 85%

Source: <https://www.usac.org/wp-content/uploads/e-rate/documents/samples/Discount-Matrix.pdf>

When To Report E-rate Data



- **Nov – Dec: Administrative Window**

- Limited time window to update E-rate profile.

- Update enrollment data

- If NSLP or surveys, update each year
- If CEP or Provision II, only update if you have started a new base year.

- Add/remove buildings to profile (if needed)

- Dates will be announced through official newsletter and my Substack newsletter.

November 2023							December 2023						
S	M	T	W	T	F	S	S	M	T	W	T	F	S
			1	2	3	4						1	2
5	6	7	8	9	10	11	3	4	5	6	7	8	9
12	13	14	15	16	17	18	10	11	12	13	14	15	16
19	20	21	22	23	24	25	17	18	19	20	21	22	23
26	27	28	29	30			24	25	26	27	28	29	30
							31						

Which Data Determines My Discount?



If your eligible data is NSLP or a type of survey:

1. Confirm total "EconDis" and "K-12Students" reported in most recent March submission.
2. Divide total "EconDis" by "K-12Students", then refer to the discount matrix.

If your eligible data is CEP or Provision II

1. Confirm total number of "DirectCert" as reported in the base year. Multiply by 1.6.
2. Divide this number by total "K-12Students, then refer to the discount matrix.

E-rate Discount Matrix		
	Category 1 / 2	
FRL Percentage	Urban	Rural
Less than 1%	20%	25%
1% to 19%	40%	50%
20% to 34%	50%	60%
35% to 49%	60%	70%
50% to 74%	80%	80%
75% to 100%	90% / 85%	90% / 85%

Source: <https://www.usac.org/wp-content/uploads/e-rate/documents/samples/Discount-Matrix.pdf>

Calendar for School Year 24-25



- **(NOW) July – Jan:** Bidding Window
 - Post requests for new bids (Form 470)
 - Award contracts ideally by Thanksgiving, January at latest (deadline Feb).

- **Nov – Dec:** Administrative Window
 - Limited time
 - Update enrollment data
 - If NSLP, use current as of last March
 - If CEP, only update if this is your new base year
 - Add/remove buildings to profile if needed

- **Jan – Mar:** Application Window
 - Submit Form 471/Funding Requests
 - Validate enrollment data

November 2023

S	M	T	W	T	F	S
			1	2	3	4
5	6	7	8	9	10	11
12	13	14	15	16	17	18
19	20	21	22		24	25
26	27	28				

December 2023

S	M	T	W	T	F	S
					1	2
3	4	5	6	7	8	9
10	11	12	13	14	15	16
17	18	19	20	21	22	23
24	25	26	27	28	29	30
31						

January 2024

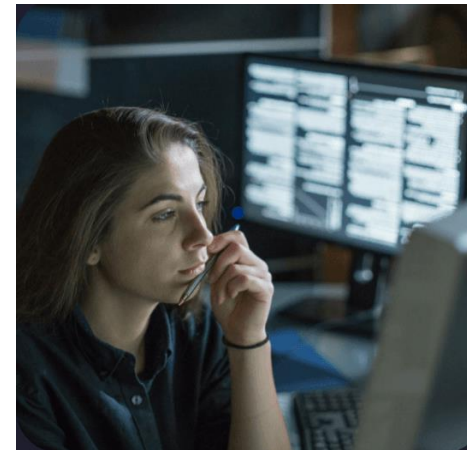
S	M	T	W	T	F	S
	1	2	3	4	5	6
7	8	9	10	11	12	13
14	15	16	17	18	19	20
21	22	23	24	25	26	27
28	29	30	31			

Near-End of Budget Cycle



- **Category 2**

- A fixed budget to last from 2021 – 2025
- This bidding window is year 4 of 5.
 - After 2025, budget will be updated with new rules and likely new eligible products.
- Great opportunity to utilize E-rate funding the next two years.
- For questions about your budget, contact us



Questions, How To Contact



- Broadband Program
 - Daniel Vogt: dvogt@sde.idaho.gov
 - Jonathan Steele: jsteele@sde.idaho.gov
- Make an appointment with us:
 - <https://calendly.com/dvogt-sde/erate>
- E-rate Customer Support:
 - 888-203-8100
 - You will need your BEN# (Billed Entity Number)
- Newsletters
 - USAC Official Newsletter: <https://www.usac.org/e-rate/learn/news-brief/>
 - Our program newsletter: <https://broadbandforidschools.substack.com/>